

Dual

Intensive Ulcer Management
Selection of Alternating or Static Mode
Power Failure Alarm, Seat Function and Auto-Firm



carilex®

Dual

Anti-decubitus air mattress replacement system for high risk patients

Microprocessor driven power unit

Dartex® coverlet

The Carilex "Dual" is an air alternating mattress replacement system which provides both alternating and static modes with microprocessor driven digital power unit. It is the ideal therapy system with Upright and Firm modes for different positions and treatment purposes to suit high risk patients who demand pressure ulcer prevention or treatment, and pressure ulcer treatment up to stage IV. This system is made with the highest quality material that is durable and reliable for homecare, nursing home, and hospital (included ICU) environments.



2" convoluted
foam base

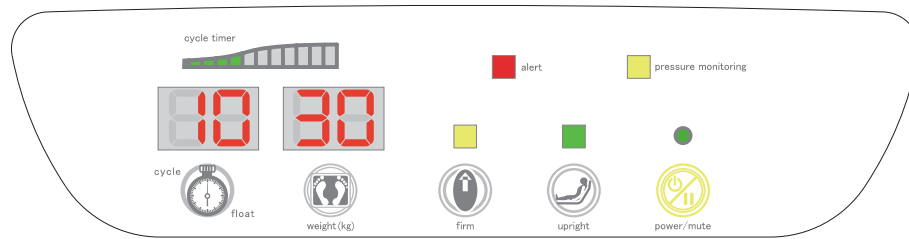


Buckle fasten to the bedframe - easy
to handle



Mattress rolls to its own
carrying bag

Power Unit Control Panel



Dual Power Unit

- Dual ability: Offers both alternating and static modes to meet individual patient's need (Choices of alternating cycle time: 10, 15, 20, 25; and 0 for static mode)
- True static: For algescic patients who suffer from spinal injuries such as fracture of instable vertebrae and illness of instable vertebrae
- I.P.S. (Intelligent Pressure Sensing) Technology: Ensures maximum pressure relief for optimal therapeutic therapy
- Upright mode: Provides additional support while patient is in articulated position to prevent "bottoming out"
- Firm mode: Inflates the mattress rapidly to maximum internal pressure for patient transferring or nursing purposes
- Panel lock function: Presses both Power and Upright buttons at the same time to lock out control panel to avoid possible tampering of setting, presses both buttons again to unlock
- Digital LED display: Indicates patient's weight and cycle time
- Visual/ Audible alarm: Indicates when either low pressure or power failure occurs
- Energy efficiency: Uses less than half of the power of a 25 watt light bulb
- Memory setting: Recall capability for abnormal power outage

Dual Mattress Replacement

- Twenty 8" tall air cells: Maximum pressure relief and therapy
- Integrated 2" convoluted foam base: Extra protection in case of power outage
- Micro ventilated air cells: Provides great air circulation and optimal patient temperature regulation from shoulder to waist
- High weight capacity: For patient up to 200 kg
- Modular air cell construction: Easy maintenance and cleaning
- Pillow function: 3 static air cells over the head zone for patient comfort
- Fast deflation CPR facility: Deflates the entire mattress within seconds in case of emergency
- *Dartex® coverlet: High quality water proof, vapor permeable quilted, high level fire retardant material, antibacterial and fungi coating coverlet

*Dartex® is a registered trade mark of Dartex Coatings Ltd.

- Biocompatibility – ISO10993-10:1995

- Flammability Standard – BS 7175:1989(1994), CAL 117 Section E



Quick release coupling for fast patient transfer mode



Integrated air filter for system durability enhancement



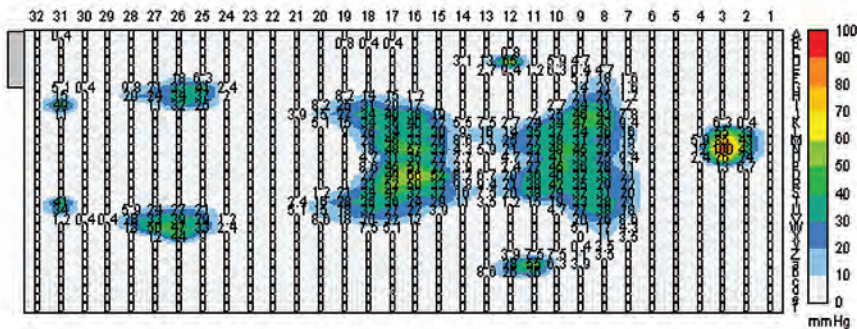
8" individual replaceable air cells with air ventilation from shoulder to waist



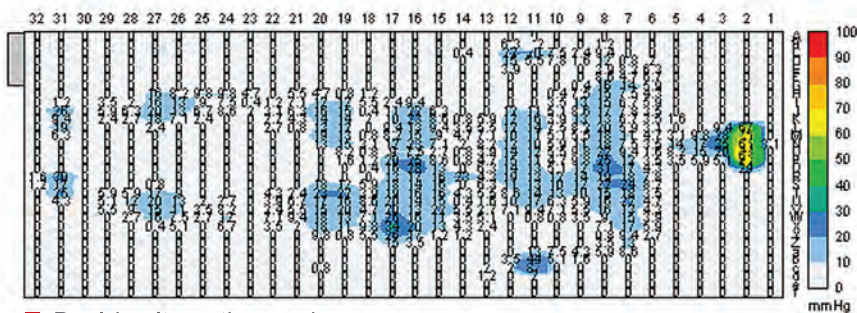
Fast deflation CPR facility

PRESSURE MAP

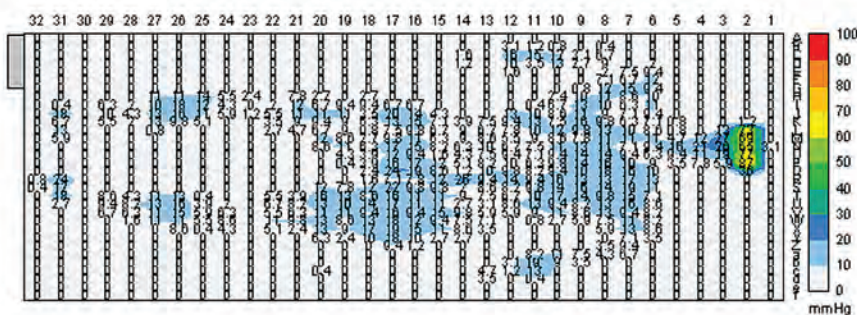
Pressure Map: These pressure maps below demonstrate the difference between Dual system and standard hospital foam mattress in the level of pressure relief and pressure redistribution.



■ Standard hospital foam mattress



■ Dual in alternating mode



■ Dual in static mode

Technical Data

Individual Model No.

Power Unit: SR361

Mattress: SR208

Coverlet: SR611

Electrical Input

AC100 – 120V/ 50 & 60 Hz,
or AC220 – 240V/ 50 Hz

Agency Approval

EN60601-1/ EN60601-1-2/ EN61000-3-2/
EN61000-3-3/ UL2601-1

Dimension

Power Unit: 26 x 22 x 8 cm

Mattress Set (MSR208):

Standard: 200 x 90 x 23.5 cm (inflated)

Narrow: 200 x 80 x 23.5 cm (inflated)

Weight

Power Unit: approx. 2.5 kg

Mattress Set: approx. 10 kg

Power Consumption

Max. 20W

Material

Power Unit: ABS fire retardant UL

Mattress Cell: 100% nylon with TPU lamination

Coverlet: 100% nylon with PU backing

Operating & Transportation & Storage Temperature/ Humidity

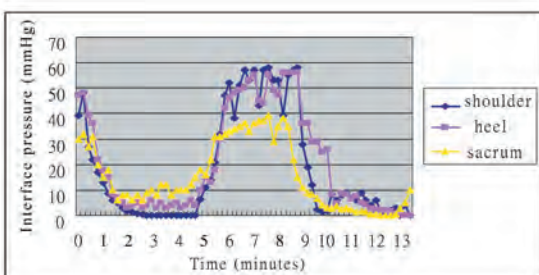
5°C - 45°C / 15% - 60%

Maximum Weight Capacity

200 kg

This power unit is not AP/ APG protected

Pressure relief graphic below demonstrates the pressure relief index over shoulder, heel and sacrum under alternating mode (cycle time: 10 minutes)



■ Volunteer: Male 30 years old, 175cm in height, 80kg in weight, BMI=26.1

CE

carilex®

Turmbergstr. 9A, D-76227 Karlsruhe, Germany · Tel: +49(0)721 16 19 835 · Fax: +49(0)721 16 19 836

Email: info@carilex.de · Website: <http://www.carilex.de>