



Moving Health Forward

## Pressure Ulcer Prevention Mattress Surfaces and Cushions

Hybrid Mattresses

Static Mattresses

Dynamic Mattresses

Cushions

Accessories



Moving Health Forward

## Vision

To advance the health of individuals with affected movement, utilising innovative and proven ways to enhance the certainty of care needed today and the care we plan to provide for tomorrow.

## Mission

DHG constantly support our healthcare partners, and the people whose healthcare needs they serve, by providing solutions that improve the vital connections between movement and health. All leading to the best recovery outcomes and healthy independence in daily living.

## Our Story

DHG is a global medical device company that supports efforts to move health forward by delivering innovative and leading solutions for individuals whose lives are impacted by reduced movement.

We strive to constantly support our healthcare partners, and the people whose healthcare needs they serve, working to keep improving the vital connections between movement and health, enabling accelerated recovery and healthy independence in daily living.

At DHG, we are passionate to work in close collaboration with healthcare professionals to enhance outcomes, lower the cost of healthcare, deliver efficiencies, and expand access to our solutions

## Our Brands



### Pressure Ulcer Prevention

DHG specialises in the manufacturing of pressure ulcer prevention solutions with a comprehensive portfolio of innovative, award-winning products including mattresses, cushions and overlays.

With significant experience in the provision of clinically proven, value for money solutions, customers benefit from a combination of innovative pressure care technologies, designed in partnership with leading clinical and healthcare establishments.

In 2016, Direct Healthcare Services' Intelligent Pressure Care Management won the prestigious Queen's Award for Enterprise in Innovation following the introduction of the Dyna-Form® Mercury Advance; a keystone hybrid mattress.



### Safe Moving & Handling

DHG's SystemRoMedic range has extensive heritage in the safe movement and handling of users across the spectrum of care environments. Providing solutions for lifting systems and manual transfer aids, the SystemRoMedic portfolio enables safer working ergonomics for the carer, whilst providing clinical effectiveness for the user. The clinical focus of the SystemRoMedic looks to release more time back to care by providing a highly-experienced, trained moving & handling team who can assess for the most appropriate moving, handling, specialist seating, in-bed or out-of-bed solution to provide effective care.



### Specialist Therapies

DHG's Specialist Therapies portfolio offers advanced technologies for use with avoidable harms.

Our Negative Pressure Wound Therapy (NPWT) offers intuitive, simple-to-use, cost effective solutions for the accelerated healing of chronic wounds.

With the knowledge that Venous Thromboembolism (VTE) is a global, life-threatening issue, DHG offer Intermittent Pneumatic Compression (IPC) solutions for use in the prevention of Pulmonary Embolism.



### Bathroom Safety

Renowned for more than 80 years, DHG's Linido bathroom safety solutions provide increased independence, safety and comfort in bathrooms, showers and toilet areas across private and public environments, as well as in hospitals. DHG offers a wide range of safe, practical, durable and ergonomic aids with modern design; creating accessible, safe and aesthetic bathrooms.

Our bathroom safety products are extensively tested for their functionality, including safety testing as well as ergonomic use and comfort, to ensure to comfort of safety every day. The complete range provide users in any bathroom or toilet situation with as much autonomy as possible.



### Rental & Service Solutions

Through DHG's Nightingale brand, we have over 20 years' experience in ad-hoc or contracted rental and servicing solutions that enable a focus on patient care across any operational budget. We offer a 24/7/365 rental service providing a range of pressure area care solutions, beds for acute and community environments, safe moving & handling equipment, specialist seating, and bariatric care equipment; ensuring that your patient receives the right care at the right time. To facilitate easier choice, we have designed a number of packages focusing on early discharge, single-handed care, rehabilitation, or capacity pressures.

With a network of nationwide, ISO 13485 accredited rental and service centres, we work closely with healthcare professionals to ensure our solutions are reliable, safe and effective. Our solutions are delivered by a highly experienced Technical Service team, who will provide on-site support and training during the delivery process.

Our ProServe® Service Solutions provide ISO 13485 compliant servicing options for the wide range of products your hospital or equipment service have on site. We offer a range of technical service packages designed to suit the needs of our customers in today's ever changing healthcare environment.

# Our History



## Sunday Times Fast Track 100

DHS recognised as the 17th fastest growing business in the UK, attributed to an innovation approach in supporting NHS Trusts.

## Innovative New Product Design Award

The Static Air HZ wins the New Product Award at the Insider Media Business and Education Partnership Awards.

## Intelligent Academy

Accredited training provider.

Asia Pacific offices opened in Perth, Australia



INVESTORS IN PEOPLE

2009

2013

2014

2015

2016

## Direct Healthcare Services founded

Designing and manufacturing 'best value' pressure area care solutions.



## NHS Collaboration Award

Recognised by MediWales for the Dyna-Form® Static Air HZ mattress which conforms to a profiling bed with no loss of mattress length to avoid the problem of heel pressure ulcers.

DHS announces partnership with the Welsh Wound Innovation Centre, a global centre of excellence in wound prevention and treatment.



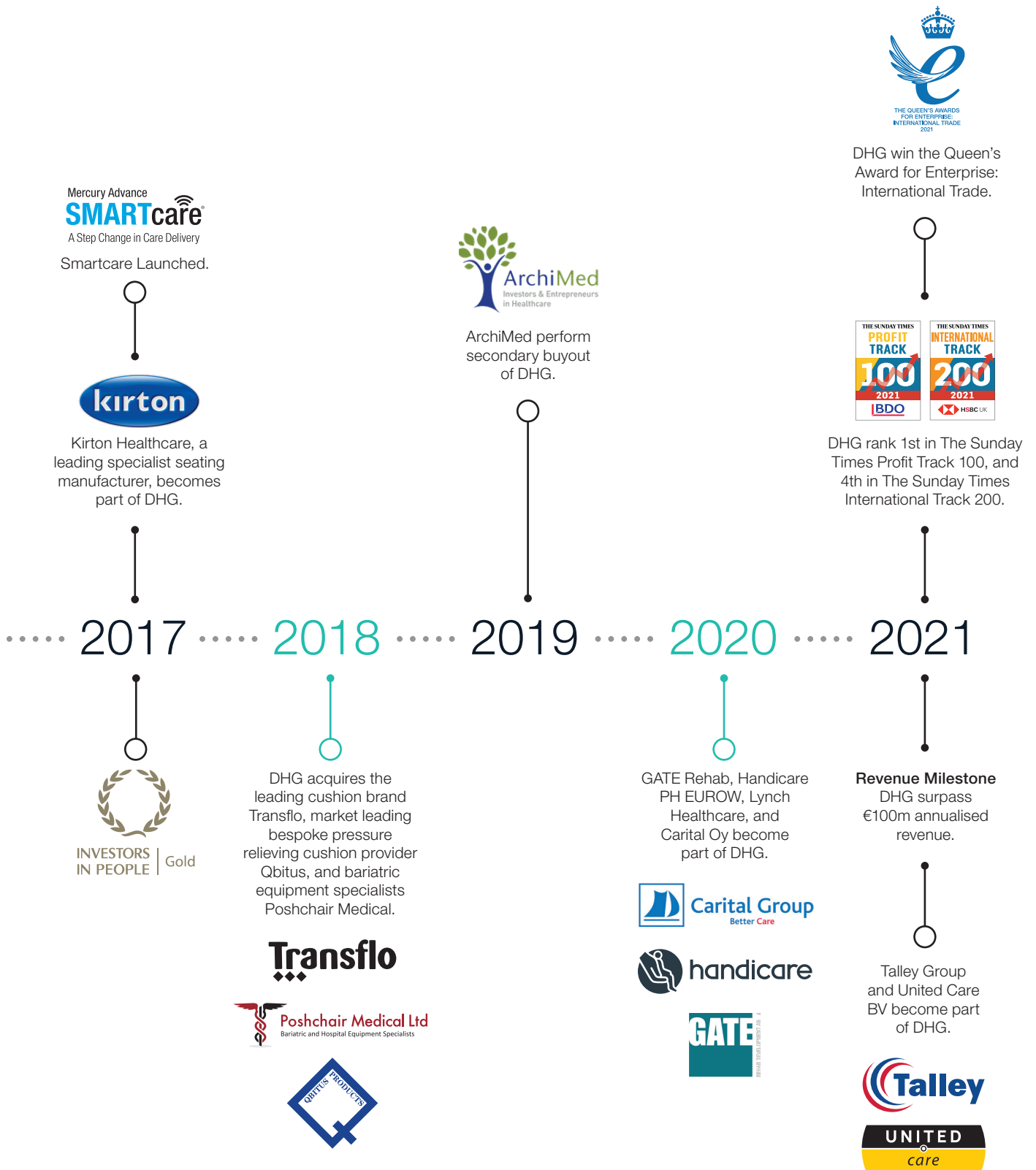
Nightingale, a leading bariatric solutions provider, becomes part of the DHG.



Intelligent Pressure Care Management® wins Queen's Award for Innovation.







## Pressure Ulcer Prevention Webcast Series

### Pressure Ulcer Development in Critical Care Patients: The Role of Tissue Deformation and Impact of Anti-Deformation Technology by Professor Amit Gefen

- Understanding the role of tissue deformation in pressure ulcer aetiology
- Identify the risks related to tissue deformation within the ICU/Critical Care setting
- Explore anti-deformation technology and its role in pressure ulcer management in Critical Care patients
- Consider the role of anti-deformation technology in comparison to alternating air therapy within the Critical Care setting

To request a booking for this Ethos Webcast, please email [ethos@directhealthcaregroup.com](mailto:ethos@directhealthcaregroup.com)



### Under Pressure: The Fundamentals of Pressure Ulcer Prevention

This Ethos Webcast explores:

- How a pressure ulcer forms
- Why pressure ulcer prevention is so important
- Terminology and why it is important
- Tracking pressure ulcers
- Are pressure ulcers unavoidable?

### Managing The Pressure: Performing & Utilising an Appropriate Risk Assessment

This Ethos Webcast explores:

- Risk assessment – process and factors
- Risk assessment tools
- Skin assessment as part of a risk assessment

### The Prevention of Pressure Ulcers Using The aSSKINg Bundle

This Ethos Webcast explores:

- How do we prevent pressure ulcers?
- How do we assess the skin?
- Surface selection and use
- Moisture on the skin
- Categorising pressure ulcers

### Taking The Pressure Off: Efficient Equipment Selection in The Community Setting

This Ethos Webcast explores:

- Identifying specific challenges surrounding equipment provision in the community setting
- Engaging patients and carers in equipment selection and use
- Evaluating care delivery

### Everything But Pressure: The Role of Shear, Friction & Micro Climate in Skin Integrity

This Ethos Webcast explores:

- The effects of pressure and shear
- Envelopment and immersion
- Cell deformation
- Microclimate and the effect of moisture on the skin

### Shifting The Pressure: Moving & Handling with Pressure Ulcer Prevention in Mind

This Ethos Webcast explores:

- The links between moving and handling and pressure ulcer prevention
- Selecting the right equipment to maintain healthy skin
- Working as a team to prevent patient harm

### Delivering Effective Wound Management Using Negative Pressure Wound Therapy by Alison McGrath

This webcast aims to provide an introduction to effective Negative Pressure Wound Therapy (NPWT), and explores the following topics:

- Wound healing physiology
- The different wound types
- NPWT definition
- Understand NPWT mode of action
- Identify wound suitability when using NPWT
- Contraindications and precautions

To book an Ethos Webcast, please visit [www.directhealthcaregroup.com/ethos-webcasts/](http://www.directhealthcaregroup.com/ethos-webcasts/)

We can also hold Ethos Webcasts specifically for you and your team. To request a booking, please email [ethos@directhealthcaregroup.com](mailto:ethos@directhealthcaregroup.com)

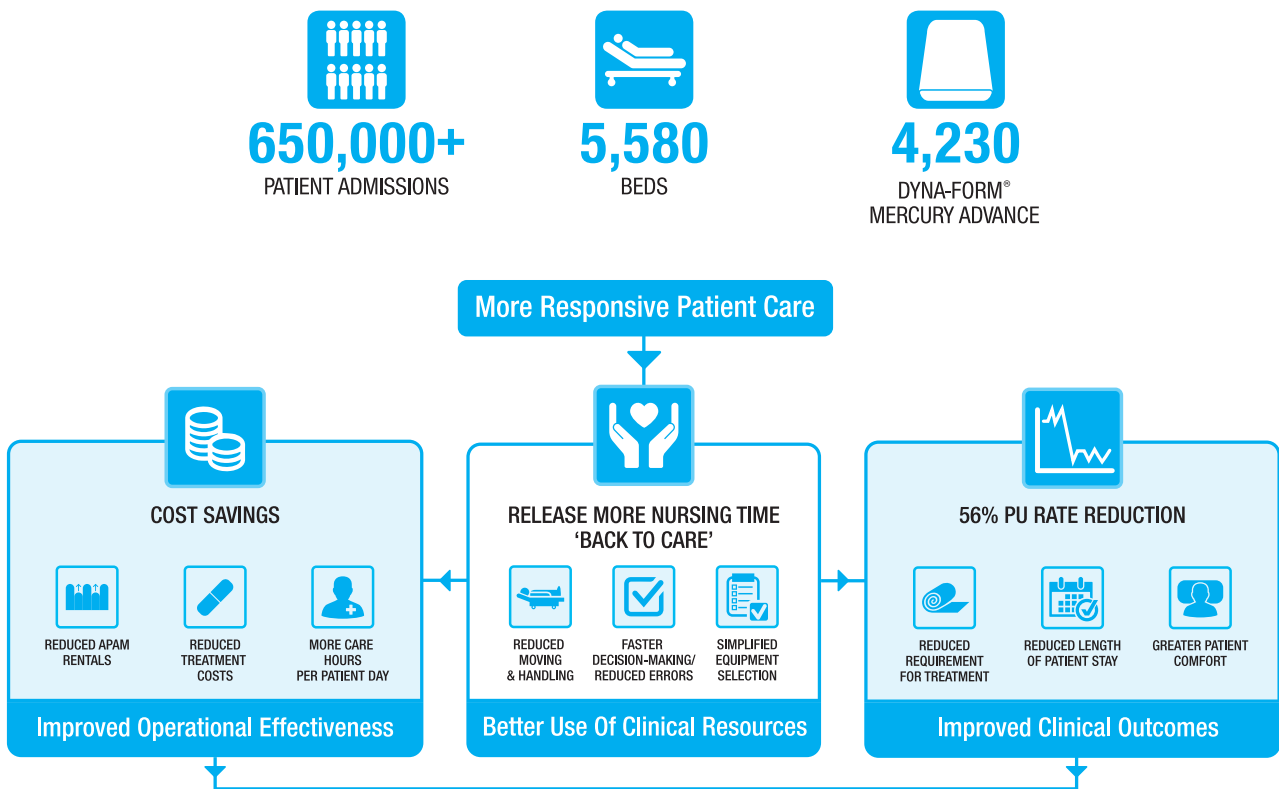


With healthcare agendas focused on achieving improved clinical outcomes and operational efficiencies, Intelligent Pressure Care Management delivers both by transforming the Pressure Ulcer Prevention care delivery model.

The Intelligent solution is not only clinically proven but designed to make a measurable difference to Pressure Ulcer Prevention and other key healthcare metrics related to efficiency savings, better use of clinical resources and average length of patient stay. Independent expert evaluations and real world evidence demonstrate the positive impact of Intelligent Pressure Care Management.

## Real-world evidence from a large-scale multisite evaluation of a hybrid mattress<sup>1</sup>

A large scale, multi-site review of hybrid implementation concludes that the powered hybrid support surface alters the process of pressure ulcer prevention care delivery, in turn delivering improved patient outcomes alongside improved operational effectiveness.



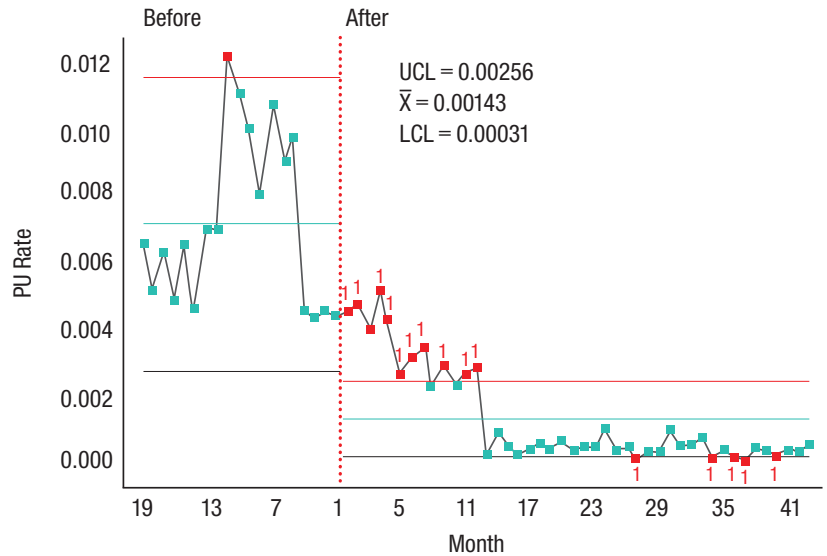
Summary of improvements achieved

“...where people are empowered to embrace available innovations it is very possible to deliver improved patient outcomes alongside improved operational effectiveness.”<sup>1</sup>

## 56% Reduction in Pressure Ulcer Incidence

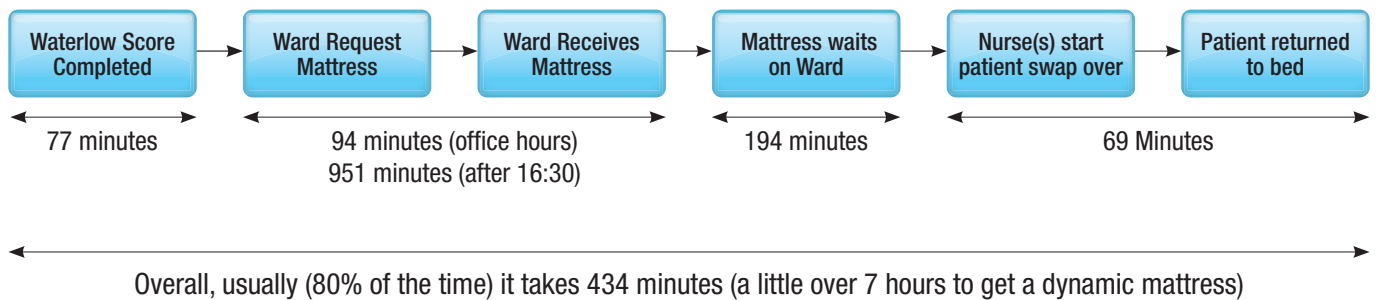
A large scale, long term evaluation examining the implementation of Intelligent Pressure Care Management concluded that the solution represents a significant step change in care delivery, with results demonstrating a 56% reduction in PU occurrence alongside significant improved operational efficiencies.

A retrospective analysis of PU data both pre- and post- hybrid implementation also showed that the reduction was sustained.

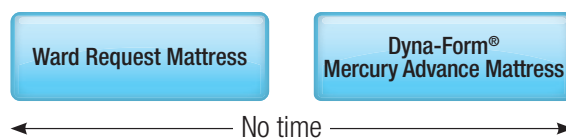


## Patients on appropriate support surface up to 7 hours faster

Prior to the implementation of Intelligent Pressure Care Management the study showed that it could take up to over 7 hours to transfer patients onto a Dynamic mattress following a clinical requirement being identified.



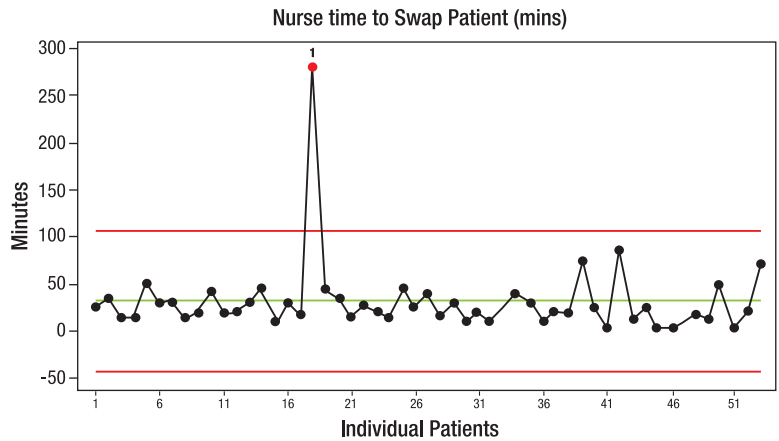
With susceptible patients at risk of developing a full-thickness pressure ulcer in just one or two hours<sup>3</sup> the reduction of this delay could potentially prevent a proportion of hospital acquired pressure ulcers. By eliminating the requirement for patient transfer, and the various delays associated with requesting a different support surface, Intelligent Pressure Care Management reduced the measure of over 7 hours to zero.



## Up to 6,500 hours of Nursing Time released 'back to care'

The time savings achieved by reducing the processes, and removing the requirements for moving and handling assistance and administration were calculated to be considerable.

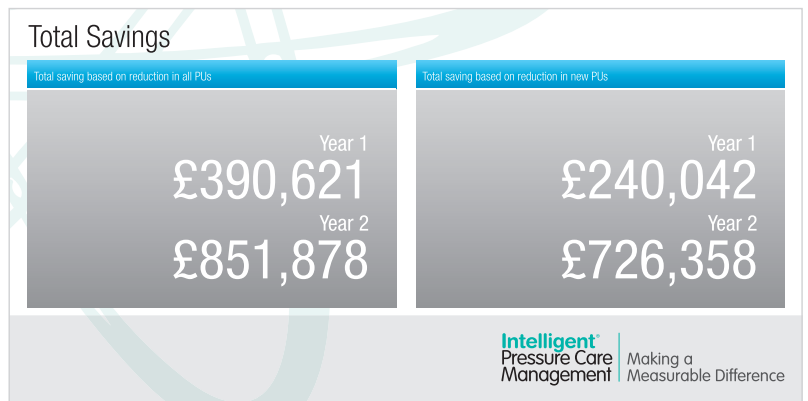
Following implementation of Intelligent Pressure Care Management the extrapolated results over a 12 month period demonstrated the potential to release up to 6,500 hours of nursing time 'back to care'.



80% (most) of the time it takes 69 minutes to swap a patient to the new mattress

## Up to 55% cost savings on traditional Dynamic mattress approach

Home		Savings		Admin	
<b>Budget Impact</b>					
Royal Wolverhampton NHS Trust					
Current Costs			5% Reduction		
Cost of managing all Pressure Ulcers in the trust	Cost of managing new Pressure Ulcers in the trust	Annual nursing costs for changing mattresses	Annual decontamination costs	Application cost of new mattresses	
£3,198,000	£362,000	£111,851	£0	£490,000	
Potential Savings					
Reduction of all Pressure Ulcers	Reduction of new Pressure Ulcers	Nursing time costs	Decontamination costs	CO2/B payment	
Year 1 £160,200	Year 1 £19,000	Year 1 £114,321	Year 1 £0	Year 1 £600,000	
Year 2 £155,820	Year 2 £17,000	Year 2 £111,058	Year 2 £0	Year 2 £600,000	



DHG Representatives offer free of charge Intelligent Business Case consultations using the latest health economic modelling tool and SPC analysis. Please contact our Sales Offices for more information.

# Dyna-Form<sup>®</sup> SMARTresponse<sup>®</sup>

The next generation hybrid support surface.

Despite ongoing improvements in pressure ulcer (PU) prevention, the clinical burden of PUs still remains high, with a 32% increase in PU incidence occurring between 2012/13 and 2017/18 and an annual cost increase of 8-9% per annum within wound care.<sup>1</sup> It has been suggested that one way to break these incidence plateaus is to use continuous patient monitoring in order to provide a level of on-going risk assessment<sup>2</sup> and to enable better decision making that is informed by patient needs.<sup>3</sup>

**SMARTresponse<sup>®</sup>**, DHG's latest innovation, is uniquely able to support clinical choice and timely intervention on an individualised basis by automatically or remotely stepping-up patient care when a period of patient non-movement has been detected.

With the focus on clinical choice, **SMARTresponse<sup>®</sup>** empowers healthcare providers to achieve earlier intervention in pressure ulcer prevention, offering easy implementation for individuals at risk of developing pressure ulcers, helping to ensure best use of clinical resources to deliver more responsive patient care, improve patient outcomes and contribute to cost-savings.<sup>4</sup>



## Auto Start

Selecting Auto Start allows the system to automatically 'step up' care when no patient movement has been detected for a period of time.



## Alert Me

Alert Me sends a message directly to the care provider when no patient movement has been detected for a period of time. This provides the carer with the ability to remotely 'step up' care from anywhere.



## Bed Exit

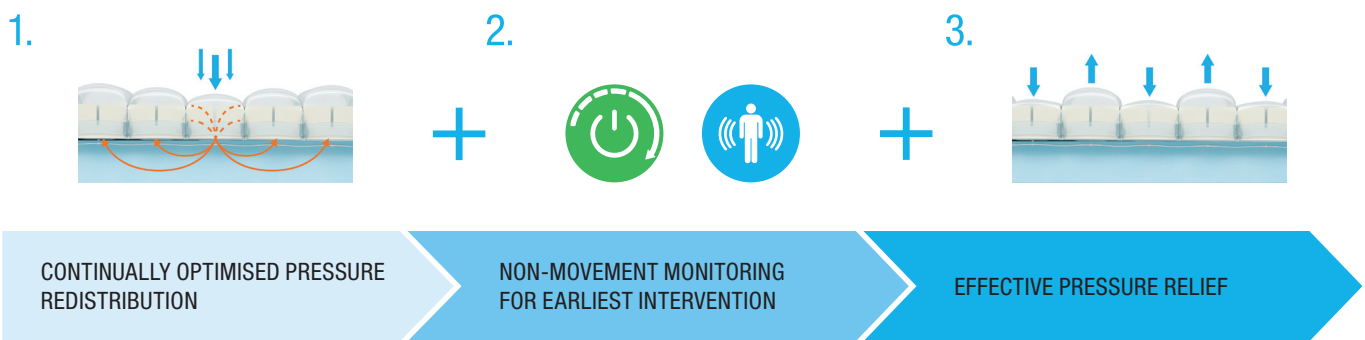
Bed Exit can be activated at any point to detect bed exit events. In the event that a Bed Exit is detected, an alert is sent directly to the care provider.



## SMARTresponse® transforms the pressure ulcer prevention care delivery model, providing the next generation hybrid mattress.

Hybrid support surfaces are clinically proven to support the prevention and treatment of pressure ulcers. Representing a step change in care delivery, hybrid solutions provide a more cost-effective solution, promoting best use of resources when compared to the traditional use of standard high specification foam and alternating pressure air mattresses.

With the addition of the SMARTresponse® power unit, DHG have transformed the hybrid support surface, enabling the immediate 'step up' of patient care automatically or remotely when a period of no patient movement has been detected:



- Advanced air displacement technology continually optimises pressure redistribution in response to patient body weight and movement.
- 'Step up' care automatically after a period of patient non-movement.
- 'Step up' care remotely when notified of a period of patient non-movement.
- Control unit provides an alternating function.
- 10 minute, 2-in-1 cycle with comfort control.

### EPUAP/NPIAP/PPPIA International Clinical Practice Guidelines 2019.

**Recommendation 1.23:** Develop and implement a risk-based prevention plan for individuals identified as being at risk of developing pressure ulcers.<sup>5</sup>

**Recommendation 5.1:** Reposition all individuals with or at risk of pressure ulcers on an individualized schedule, unless contraindicated.<sup>5</sup>

**Recommendation 5.2:** Determine repositioning frequency with consideration for the individual's level of activity, mobility and ability to independently reposition.<sup>5</sup>

SMARTresponse® provides bespoke and individualized pressure redistribution and pressure relief in a single support surface, and can play a role in determining patient repositioning, with consideration for the individual's level of activity, by constantly monitoring patient movement.

### Technical Specifications

Product Code	MAT1620001
Risk Category	Very High Risk
Weight Limit	No minimum weight limit. 254kg max. patient weight
Warranty	2 years
Dimensions	Standard size 198cm (L) x 88cm (W) x 15cm (H). Variable sizes available
Product Weight	13.3kg mattress. 1.7kg control unit
Cycle Time	10 minutes
Voltage	220-240V, 50Hz

### References

1. Guest, J., Fuller, G. W., & Vowden, P. (2020). Cohort Study Evaluating the Burden of Wounds to the UK's National Health Service in 2017/2018: Update from 2012/2013. *BMJ Open*, 10(12);e045253.
2. Brienza, D. (2020). Translating Aetiological Knowledge into Support Surface Science. EPUAP 2020 Virtual Conference Abstract.
3. Nixon, J. et al. (2019). Pressure Relieving Support Surfaces for Pressure Ulcer Prevention (PRESSURE 2): Clinical and Health Economic Results of a Randomised Controlled Trial. *EClinicalMedicine*, 14:42-52.
4. Fletcher, J., Tite, M., & Clark, M. (2016). Real-World Evidence from a Large-Scale Multisite Evaluation of a Hybrid Mattress. *Wounds UK*, 12(3):54-61.
5. European Pressure Ulcer Advisory Panel, National Pressure Injury Advisory Panel and Pan Pacific Pressure Injury Alliance. Prevention and Treatment of Pressure Ulcers/Injuries: Quick Reference Guide. Emily Haesler (Ed.). EPUAP/NPIAP/PPPIA:2019.



DHG work with the world's leading clinical experts to ensure our products are reliable, safe and effective at supporting healthcare providers deliver pressure care solutions. With over 30 years' experience designing and manufacturing pressure care products, all products in the DHG Product Range are supported with robust clinical evidence.

All products are manufactured to standards:



Australian Government  
Department of Health  
Therapeutic Goods Administration

## Guide to Product Range Symbols

The Risk Category symbols contained in our product information correspond with the Waterlow Pressure Ulcer Prevention/Treatment Policy as detailed. The colour of the different Risk Categories also corresponds with the Purpose T Pressure Ulcer Risk Assessment framework.



### 20+ Very High Risk Waterlow Score

Suitable for use with patients clinically evaluated to be at Very High Risk of developing pressure damage.



### 15+ High Risk Waterlow Score

Suitable for use with patients clinically evaluated to be at High Risk of developing pressure damage.



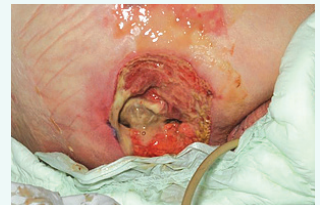
### 10+ At Risk Waterlow Score

Suitable for use with patients clinically evaluated to be At Risk of developing pressure damage.

Please note that all Pressure Ulcer risk assessment systems are not intended to be used prescriptively for equipment selection or replace clinical judgement which should always be the overriding factor in pressure ulcer prevention and treatment planning.

## Clinical Application

Our product range is designed to provide solutions for use on all categories of pressure ulcers, in the prevention and treatment stages up to and including category IV. DHG mattress systems work in conjunction with good nursing procedures and in line with tissue viability protocols.



Images supplied by the Welsh Wound Innovation Centre.



DHG products are available in a range of different cover fabrics, all designed to protect the core of the mattress or cushion in line with Tissue Viability and Infection Control protocols, whilst ensuring optimum patient comfort.

**Dyna-Form®  
Cover Fabric**     **best for general use**

Suitable for use across a diverse range of healthcare settings, our standard cover fabric is a highly durable, multi-stretch, vapour permeable cover with a toughened polyurethane base. The cover properties contribute towards the infection control and tissue viability standards of a modern hospital, nursing or homecare environment.

**Dyna-Form®  
Pro-Formance Fabric**     **best for a long lifespan**

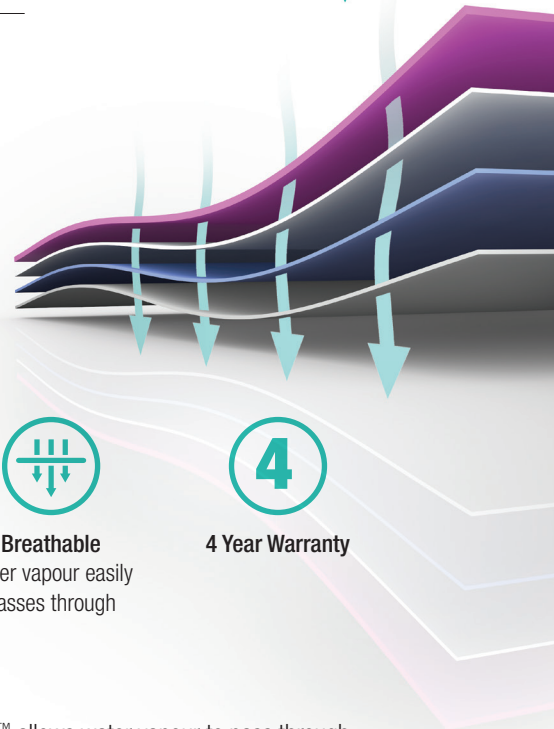
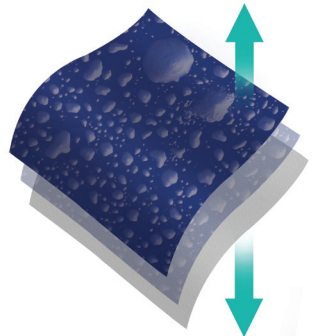
Our Dyna-Form® Pro-Formance™ Fabric is the very latest, high durability fabric, designed in conjunction with healthcare professionals and polyurethane coating specialists Dartex Coatings. Launched following an extended research and trial period Dyna-Form® Pro-Formance™ is designed with primary pressure area care delivery, coupled with extensive longevity at the very forefront of the product.

**Dyna-Form®  
Vapour-Flow™**     **best for microclimate**

Dyna-Form® Vapour-Flow™ is a mattress cover fabric designed to support improved microclimate management.

With a significantly higher MVTR than standard cover fabrics, Dyna-Form® Vapour-Flow™ utilises our most advanced moisture vapour transfer technologies.

Dyna-Form® Vapour-Flow™ has been designed specifically for medical mattress applications in collaboration with Dartex Coatings, world leaders in medical support surface fabrics.



**Cooling Effect**  
50% MVTR



**Microclimate**  
controls temperature  
and humidity



**100%  
Waterproof**



**100%  
Waterproof**



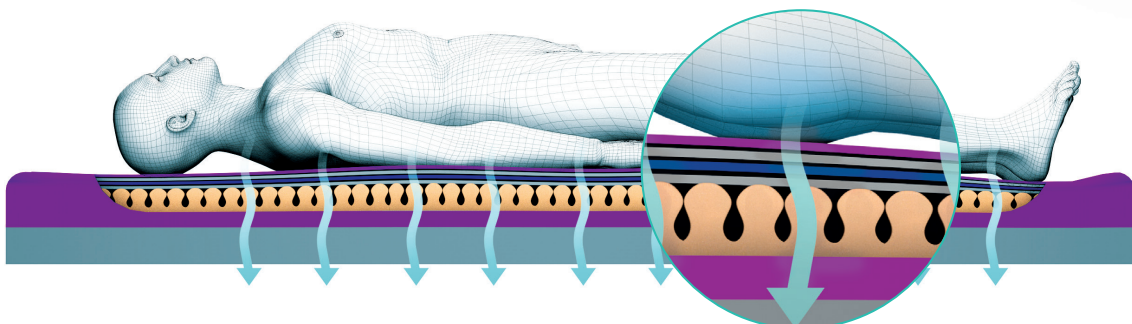
**Breathable**  
water vapour easily  
passes through



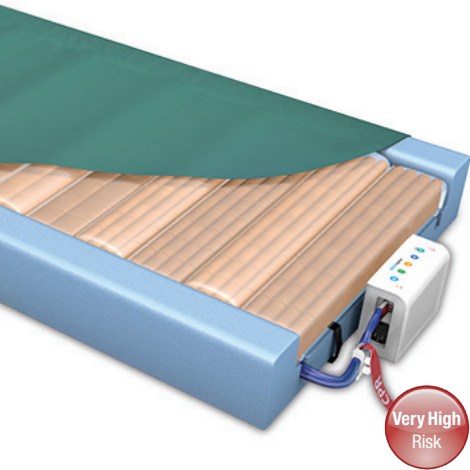
**4 Year Warranty**

**How Does It Work?**

Whilst remaining completely waterproof, the unique molecular structure of Dyna-Form® Vapour-Flow™ allows water vapour to pass through up to five times faster than a standard fabric, producing a 'cooling effect' and helping to contribute to the control of both temperature and humidity. The wipe-clean cover fabric also features 4-way stretch to help minimise the effects of shear and friction forces.



## HYBRID MATTRESS RANGE



Very High Risk

### Dyna-Form<sup>®</sup> SMARTresponse<sup>®</sup>

**Mattress Replacement System**  
MAT32

**Weight limit:** 40 stone / 254kg capacity

**Cycle Time:** 10 minutes

**Warranty:** 2 Years



Clinical Application / PU Category

With the focus on clinical choice, SMARTresponse<sup>®</sup> empowers healthcare providers to achieve earlier intervention in pressure ulcer prevention, offering easy implementation for individuals at risk of developing pressure ulcers, helping to ensure best use of clinical resources to deliver more responsive patient care, improve patient outcomes and contribute to cost-savings.



#### Auto Start

Selecting Auto Start allows the system to automatically 'step up' care when no patient movement has been detected for a period of time.



#### Alert Me

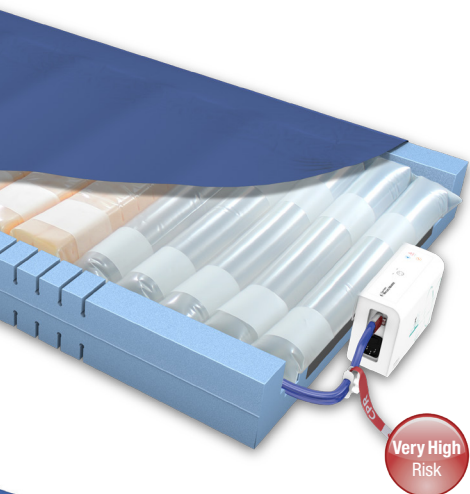
Alert Me sends a message directly to the care provider when no patient movement has been detected for a period of time. This provides the carer with the ability to remotely 'step up' care from anywhere.



#### Bed Exit

Bed Exit can be activated at any point to detect bed exit events. In the event that a Bed Exit is detected, an alert is sent directly to the care provider.

#### Dynamic Hybrid Mattress



Very High Risk

### Mercury Advance SMARTcare<sup>®</sup>

**Mattress Replacement System**  
MAT1610001

**Weight limit:** 40 stone / 254kg capacity

**Cycle Time:** 10 minutes

**Warranty:** 2 Years

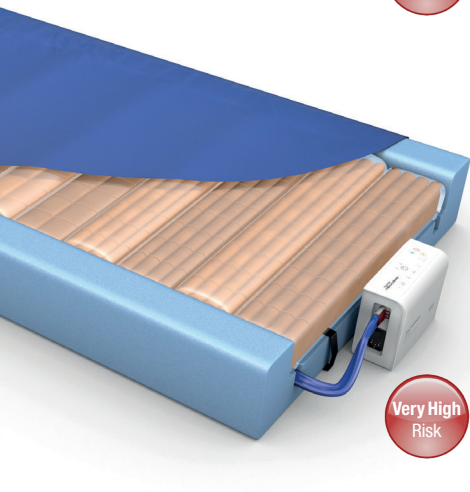


Clinical Application / PU Category

Mercury Advance Smartcare<sup>®</sup> is clinically proven to support the prevention and treatment of pressure ulcers. Representing a step change in care delivery, achieved by reducing the number of steps and time involved in getting patients onto the right support surface, Mercury Advance Smartcare<sup>®</sup> is also a more cost effective solution, promoting best use of resources.

Mercury Advance Smartcare<sup>®</sup> can easily be stepped up from Static to Dynamic mode, and down again when deemed clinically appropriate, with no delays, associated administration or moving and handling requirements for patient transfer.

#### Dynamic Hybrid Mattress



Very High Risk

### Dyna-Form<sup>®</sup> Mercury Advance

**Mattress Replacement System**  
MAT1210001

**Weight limit:** 40 stone / 254kg capacity

**Cycle Time:** 10 minutes

**Warranty:** 2 Years



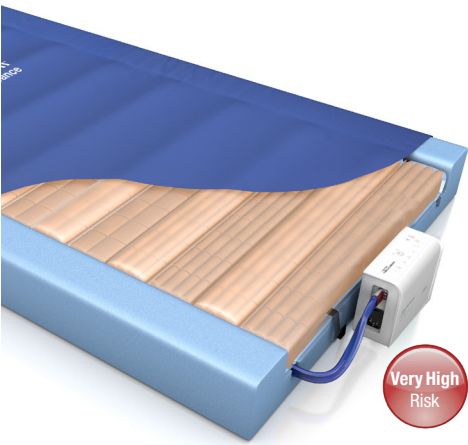
Clinical Application / PU Category

The Dyna-Form<sup>®</sup> Mercury Advance mattress is a dynamic replacement system, combined with the benefits of modern foam technology.

Offering high levels of patient comfort, this unique system has the facility to 'step up' to that of a dynamic mattress when clinically required. Similarly, the mattress function can be 'stepped down' as necessary.

Please note this product is also available with PU covered umbilical.

#### Dynamic Hybrid Mattress



**Dyna-Form<sup>®</sup>  
Mercury Advance  
Bari**

**Mattress Replacement System**  
MAT1510001

**Weight limit:** 60 stone / 380kg

**Cycle Time:** 10 minutes

**Warranty:** 2 Years

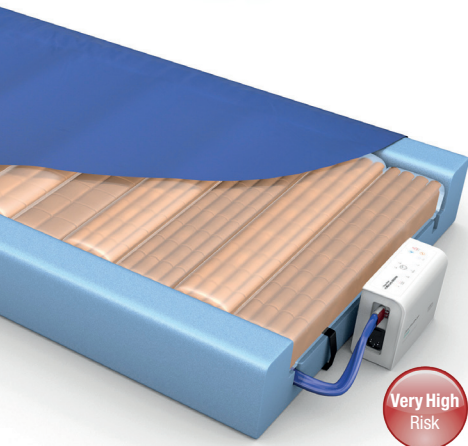


Clinical Application / PU Category

The Dyna-Form<sup>®</sup> Mercury Advance Bari mattress is a 'Very High Risk' dynamic replacement system, combined with the benefits of modern foam technology.

Offering high levels of patient comfort, this unique system has the facility to "step up" to that of a dynamic mattress when clinically required. Similarly, the mattress's function can be downgraded as the patient's condition improves.

**Dynamic Hybrid Mattress**



**Dyna-Form<sup>®</sup>  
Mercury Advance  
Trolley**

**Mattress Replacement System**  
MAT1260001

**Weight limit:** 40 stone / 254kg capacity

**Cycle Time:** 10 minutes

**Warranty:** 2 Years



Clinical Application / PU Category

The Dyna-Form<sup>®</sup> Mercury Advance Trolley Mattress has been designed especially for users considered to be that of "Very High Risk" of pressure ulcer development in potentially lengthy A&E waiting environments.

This product can be made to measure in order to fit most trolley designs and is ideal for use in busy A&E departments that have an extensive patient turnover. Offering high levels of patient comfort, this system has the facility to "step up" to that of a dynamic mattress when clinically required. Similarly, the mattress function can be downgraded as the patient's condition improves.

**Dynamic Hybrid Mattress**



**Dyna-Form<sup>®</sup>  
Static Air HZ**

**Static Mattress Replacement**  
MAT0510001

**Weight limit:** 40 stone / 254kg

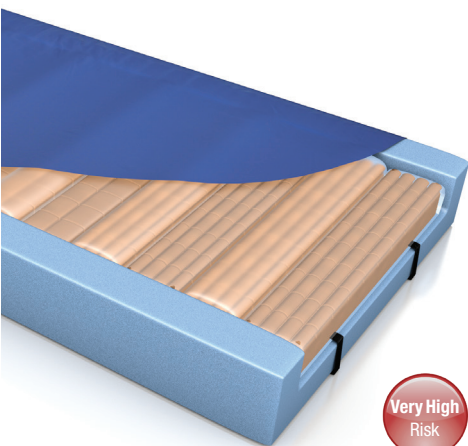
**Warranty:** 5 Years



Dyna-Form<sup>®</sup> Static Air HZ – A New Generation of Static Support Surface, developed in conjunction with the Welsh Wound Innovation Centre. Dyna-Form<sup>®</sup> Static Air HZ is a mattress replacement system that combines the benefits of effective air displacement technology with the best of modern foams for a new standard of innovative pressure ulcer prevention and management.

A new and unique 'air only' Intelligent Heel Zone and specially designed U-Core effectively offload pressure on the particularly vulnerable heel area. Dyna-Form<sup>®</sup> Static Air HZ is specifically designed for patients considered to be at "Very High Risk" of pressure ulcer development.

**Static Hybrid Mattress**



**Dyna-Form<sup>®</sup>  
Mercury Static Air**

**Mattress Replacement System**  
MAT0810001

**Weight limit:** 40 stone / 254kg capacity

**Warranty:** 2 Years



Clinical Application / PU Category

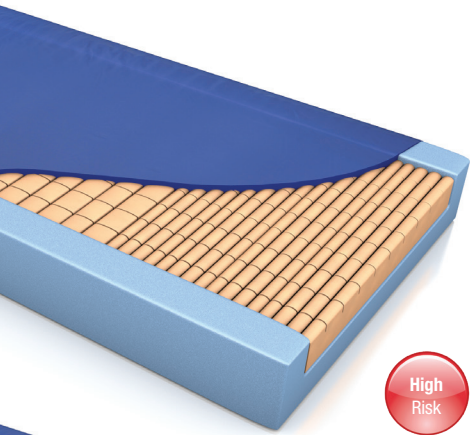
The Dyna-Form<sup>®</sup> Mercury Static Air mattress is specifically designed for users considered to be at "Very High Risk" of pressure ulcer development, combining the benefits of effective air displacement technology with the best of modern foams for excellent pressure reduction.

With patient compliance enhanced through the high levels of comfort offered and requiring no powered pump the system is ideal in community and palliative care settings whilst the clinical benefits and ease of use make it equally suitable in the acute ward environment. Incorporating 14 air and foam filled cells, a patented valve system allows Reactive Airflow System (RAS™) technology to displace and adjust to the patient's body weight and movement.

**Static Hybrid Mattress**



## STATIC MATTRESS RANGE



### Dyna-Form® Mercury

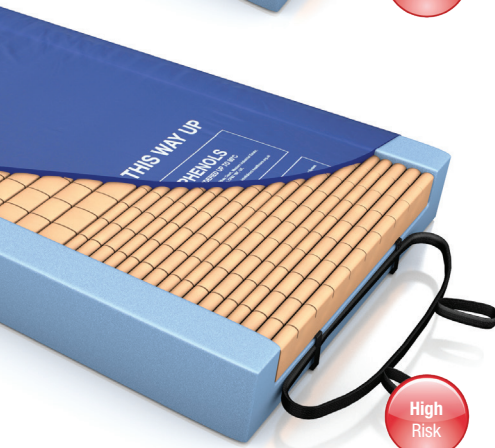
**Static Mattress Replacement**  
MAT0110001

**Weight limit:** 40 stone / 254kg

**Warranty:** 8 Years Foam /  
4 Years Cover

The Dyna-Form® Mercury mattress comprises of a specialist ‘castellated cut’ at the patient interface and a combination of the highest quality Combustion Modified High Resilient foam, providing excellent pressure redistribution properties, great patient comfort and product longevity.

Also available with cold foam.



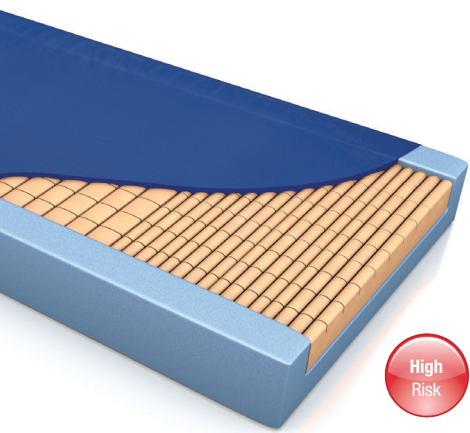
### Dyna-Form® Mercury Fire Evac

**Static Mattress Replacement**  
MAT0610001

**Weight limit:** 40 stone / 254kg

**Warranty:** 8 Years Foam /  
4 Years Cover

The Dyna-Form® Mercury Fire Evacuation mattress has been designed to ensure that in the unfortunate event of a fire occurring within your hospital, then each and every patient has an evacuation system within easy reach. With an ever growing and aging population it is becoming increasingly difficult to know just how many bed bound patients there are within the hospital at any one time, and therefore just as impossible to know that there are enough fire evacuation systems available.



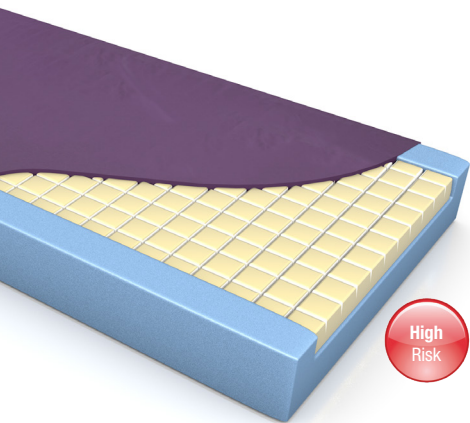
### Dyna-Form® Mercury Safety 7

**Static Mattress Replacement**  
MAT0710001

**Weight limit:** 40 stone / 254kg

**Warranty:** 8 Years Foam /  
4 Years Cover

The Dyna-Form® Mercury Safety 7 mattress is a Crib 7 standard surface which is fully sealed and designed to withstand deliberate or accidental damage, making it suitable for use in environments where challenging behaviour may be an issue (e.g. secure units, bail hostels, psychiatric and mental health units). Dyna-Form® Mercury Safety 7 is designed for users considered to be at “High Risk” of pressure ulcer development, blending the finest quality Combustion Modified Ether foam (CME) to provide not only the best pressure re-distribution properties, but great patient comfort & product longevity.



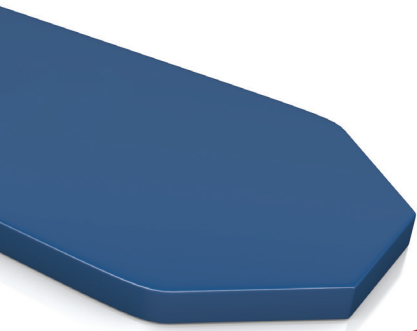
### Dyna-Form® Saturn

**Static Mattress Replacement**  
MAT0310001

**Weight limit:** 40 stone / 254kg

**Warranty:** 8 Years Foam /  
4 Years Cover

The Dyna-Form® Saturn mattress is designed for users considered to be that of “High Risk” of pressure ulcer development and for patients requiring complete comfort, whilst maintaining the highest pressure care support from a static mattress. By using a blend of temperature sensitive, visco elastic foam at patient interface with the finest quality CME foam, the Dyna-Form® Saturn provides excellent pressure re-distribution properties, but with patient comfort foremost considered within its design.



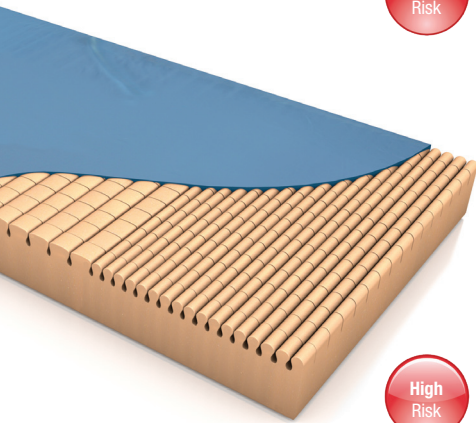
## Dyna-Form® Trolley Mattress

**Static Mattress Replacement**  
MAT0410080

**Weight limit:** 26 stone / 165kg

**Warranty:** 1 Year

The Dyna-Form® Trolley Mattress has been designed especially for users considered to be that of “High Risk” of pressure ulcer development in potentially lengthy A&E waiting environments. This product can be made to measure in order to fit most trolley designs. Dyna-Form® design quality comprises of a specialist “castellated cut” CME foam surface, complete with a high frequency welded, multi-stretch, vapour permeable cover and non-slip base. This product is ideal for use in busy A&E departments that have an extensive patient turnover.



## Dyna-Form® Jupiter

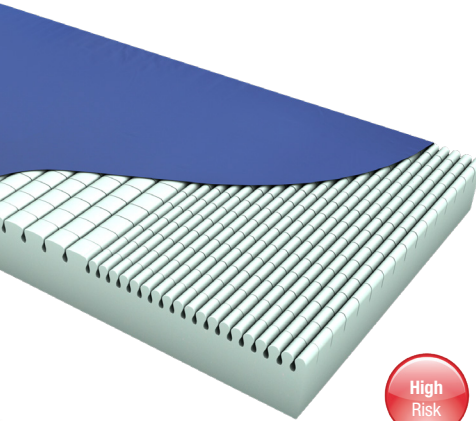
**Static Mattress Replacement**  
MAT0210001

**Weight limit:** 26 Stone / 165kg

**Warranty:** 3 Years

The Dyna-Form® Jupiter mattress can be used with patients considered to be up to that of “High Risk” of pressure ulcer development. Using modern foam designs, castellated on one side to aid pressure ulcer management, whilst providing excellent patient comfort; this mattress can be used without a turning programme, aiding moving & handling procedures. Jupiter can work comfortably with any electric profiling bed frame. Its durable design uses only the very best CME foam & fabrics to provide a modern mattress complete with infection control enhancing cover.

**Also Available in Pro-Formance™ Strikethrough Resistant Cover.**



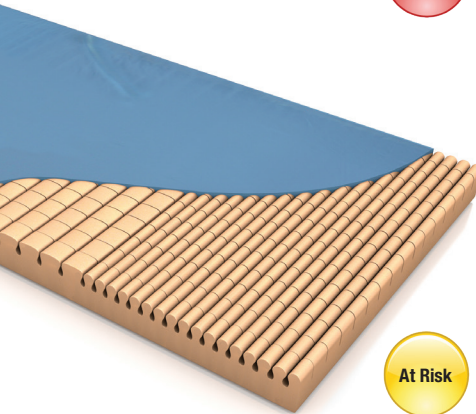
## Dyna-Form® Community

**Static Mattress Replacement**  
MAT2410001

**Weight limit:** 26 Stone / 165kg

**Warranty:** 3 Years

The Dyna-Form® Community mattress can be used with patients considered to be up to that of “High Risk” of pressure ulcer development. Using modern foam designs, castellated on one side to aid pressure ulcer management, whilst providing excellent patient comfort; this mattress can be used without a turning programme, aiding moving & handling procedures. The Dyna-Form® Community mattress can work comfortably with any electric profiling bed frame. Its durable design uses only the very best CME foam & fabrics to provide a modern mattress complete with infection control enhancing cover.



## Dyna-Form® Mattress Overlay

**Mattress Overlay System**  
MAT0410001

**Weight limit:** 26 Stone / 165kg

**Warranty:** 2 Years

The Dyna-Form® Mattress Overlay has been created for users considered to be “At Risk” of pressure ulcer development. To be used in conjunction with any standard mattress, Dyna-Form® design quality comprises of a specialist “castellated cut” CME foam surface, complete with a sewn multi-stretch, vapour permeable cover and non-slip base. This product is ideal for use in the homecare environment.

## DYNAMIC MATTRESS RANGE



### Dyna-Form<sup>®</sup> Air Suresse

**Mattress Replacement System**  
MAT1110001

**Weight limit:** 40 stone / 254kg

**Cycle Time:** 12 minutes

**Warranty:** 2 Years



Clinical Application / PU Category

The Dyna-Form<sup>®</sup> Air Suresse mattress is the latest high dependency, dynamic mattress replacement system within the DHG range of products.

The Air Suresse features continuous low pressure therapy, equalising pressure within the cells to allow for greater immersion into the mattress surface and optimum pressure redistribution.

This product is manufactured with a dual compressor system, allowing suitable application to those much larger, complex patients and a 40 stone / 254kg weight limit as standard. This modern pump technology also comes equipped with a true fault diagnostic system, providing potential, rapid minor problem diagnosis and therefore real peace of mind.



### Dyna-Form<sup>®</sup> Air Pro-Plus

**Mattress Overlay System**  
MAT1310001

**Weight limit:** 28 stone / 178kg

**Cycle Time:** 10 minutes

**Warranty:** 2 Years



Clinical Application / PU Category

The Dyna-Form<sup>®</sup> Air Pro-Plus mattress is part of the latest developed, dynamic mattress replacement systems available from DHG. This modern technology actually comes equipped with a true fault diagnostic system. The sleek pump design provides ease of use to any carer, whilst removing the "risk" of inappropriately selecting the wrong pressure setting.

Its pressure adjustment system, deemed suitable for patients up to and including 28 stone / 178kg and that of "Very High Risk" of pressure ulcer development, ensures that this product is suited to that of any health or homecare environment.



### Quattro<sup>®</sup> Plus

**Mattress Replacement System**  
QPS02C001

**Weight limit:** 31 stone/ 200kg

**Cycle time:** 16 minutes

**Warranty:** 2 years

1-in-4 alternating therapy mattress that supports 75% of the patient's body at all times, on groups of three inflated cells. TISSUEgard™ enables the partial immersion and envelopment of the patient into the support surface, and Ortho-Differential Support provides firmer outer edges of the mattress to facilitate patient transfers.



### Quattro<sup>®</sup> Acute

**Mattress Replacement System**  
QAS02C001

**Weight limit:** 39 stone/ 250kg

**Cycle time:** 16 minutes

**Warranty:** 2 years

1-in-4 therapy with continuous low pressure to provide pressure ulcer prevention and treatment in the most dependent of patients. Deep Cell Therapy™ allows the cells to run at lower internal pressures, minimising the pressure applied to the patient's skin and subcutaneous tissues during the cycle. TISSUEgard™ enables the partial immersion and envelopment of the patient into the support surface, and Ortho-Differential Support provides firmer outer edges of the mattress to facilitate patient transfers.





## Carital® Optima

**Mattress Replacement System**  
MAT3010001

**Weight limit:** 47 stone/ 300kg

**Warranty:** 3 years

**Carital® Bario**  
MAT4010007

**Weight limit:** 55-62 stone / 350-400kg

**Warranty:** 3 years

**Carital® Neo**  
MAT5010001

**Weight limit:** 0-6kg

**Warranty:** 3 years

The Carital® Optima is a dynamic, anti-deformation mattress replacement system. Offering high levels of patient comfort, the mattress utilises continuous low pressure to provide pressure redistribution through high levels of immersion and envelopment. The Carital® Optima's air cell structured minimum pressure mattress maximises the contact area, whilst minimising the contact pressure and tissue deformation. Automatically adjusting to the user, the Carital® Optima is for patient groups that cannot tolerate movement, but are still at Very High Risk of pressure ulcer development.

Also available as Carital® Bario and Carital® Neo

## CUSHION RANGE

### Dyna-Form® Mercury Advance Alternating Cushion

**Product Code**  
CUS1210001

**Weight limit:** No minimum weight limit.  
Product evaluated to 24 stone / 152Kg capacity

**Cycle Time:** 10 minutes

**Warranty:** 2 Years

**I II III IV**  
Clinical Application / PU Category

The Dyna-Form® Mercury Advance Alternating Cushion is a dynamic replacement seating system, combined with the benefits of modern foam technology. It is specifically designed for patients considered to be at “Very High Risk” of pressure ulcer development.

Offering high levels of patient comfort, this unique system has the facility to “step up” to that of a dynamic cushion when clinically required. Similarly, the cushion function can be ‘stepped down’ as the patient’s condition improves. A higher maximum weight capacity, up to 24 stone / 152kg, allows the product to meet the challenges of heavier patients.



Very High Risk

### Dyna-Tek® Intelligent Air

**Product Code**  
CUS0810012

**Weight limit:** 24 stone / 152Kg

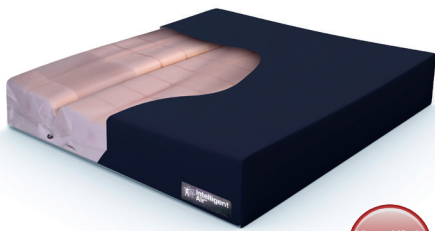
**Warranty:** 2 Years

**I II III IV**  
Clinical Application / PU Category

The Dyna-Tek® Intelligent Air cushion sets a brand new standard in innovative wheelchair seating, delivering superior ‘bespoke’ pressure redistribution without the need for any set up or re-pumping air lost over time.

Dyna-Tek® Intelligent Air incorporates Reactive Airflow technology, a system of air and foam-filled cells with a patented valve system designed to displace and adjust air in response to user body weight and movement.

Also available as a low profile cushion.



Very High Risk

### Dyna-Tek® Gel Cushion

**Product Code**  
CUS0710001

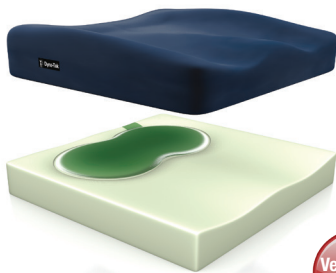
**Weight limit:** 25 stone / 159kg

**Warranty:** 2 Years

**I II III IV**  
Clinical Application / PU Category

The Dyna-Tek® Gel Cushion has been designed using the latest polyurethane gel. By incorporating the most advanced raw materials during the manufacturing process, enhanced postural management and greater pressure re-distribution is achieved. The cooling gel surface assists any modern pressure ulcer management process by providing a minor reduction of the skin surface temperature.

This product is specifically made for users considered to be at “Very High Risk” of pressure ulcer development. Equally at home in a ward, homecare or wheelchair environment, Dyna-Tek® Gel Cushion gives advanced comfort and greater care to the user.



Very High Risk

### Dyna-Tek® Posture Visco

**Product Code**  
CUS0610001

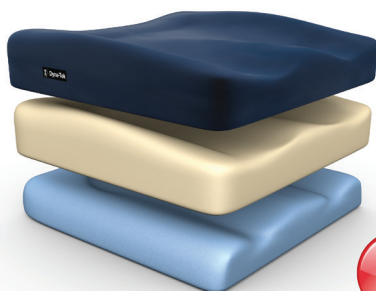
**Weight limit:** 24 stone / 152kg

**Warranty:** 2 Years

**I II III IV**  
Clinical Application / PU Category

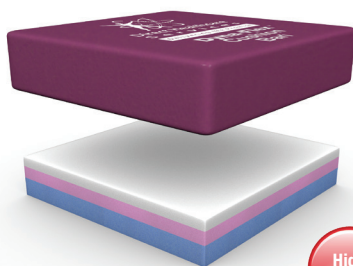
The Dyna-Tek® Posture Visco Cushion is designed to create better postural management, along with greater pressure re-distribution. This product is specifically made for users considered to be at “High Risk” of pressure ulcer development. Designed primarily for the wheelchair sector, however equally at home for use on the ward or homecare environment.

Dyna-Tek® Posture Visco provides the ultimate combination of pressure care, patient comfort and pelvic stability.



High Risk





High Risk

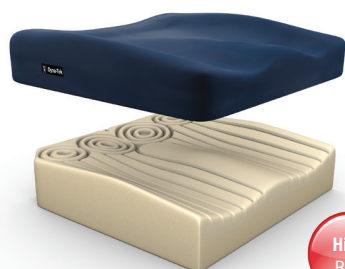
### Dyna-Flex<sup>®</sup> Cushion

**Product Code**  
CUS0410001

**Weight limit:** 24 stone / 152kg

**Warranty:** 2 Years

The Dyna-Flex<sup>®</sup> Cushion incorporates the most exclusive combination of visco elastic & foam technology, providing outstanding pressure redistribution and superior patient comfort. The temperature sensitive memory foam softens at patient interface, thus giving even weight distribution, whilst the CMHR underside prevents the foam from bottoming out. Complete with a well designed cover and non-slip base, this product is ideal for use in all hospital, nursing or homecare environments.



High Risk

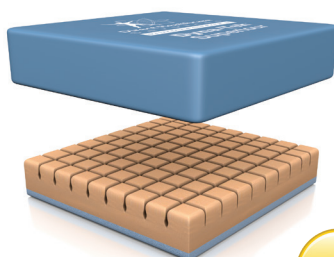
### Dyna-Tek<sup>®</sup> Owl

**Product Code**  
CUS0310001

**Weight limit:** 24 stone / 152kg

**Warranty:** 2 Years

The Dyna-Tek<sup>®</sup> Owl Cushion is a uniquely designed postural management product, providing exceptional pressure redistribution with its 'Owl' contoured design. Designed predominantly to house the ischial tuberosities within its circular surface, this product shares the patient's weight equally, in areas most vulnerable to skin breakdown. The Dyna-Tek<sup>®</sup> Owl provides the ultimate combination of pressure care and patient comfort.



At Risk

### Dyna-Tek<sup>®</sup> Superior

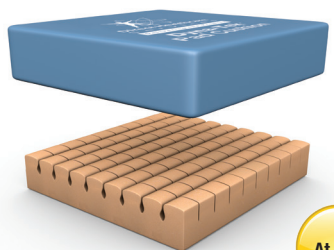
**Product Code**  
CUS0210001

**Weight limit:** 18 stone / 114kg

**Warranty:** 2 Years

The Dyna-Tek<sup>®</sup> Superior Cushion design comprises of a specialist 'castellated cut' foam surface, ensuring the reduction of heat & moisture build up, whilst achieving maximum pressure redistribution.

A base layer of high density blue foam prevents patient bottoming whilst enhancing product longevity. Complete with a high frequency welded cover and non slip base, this product is ideal for use in the hospital, nursing or homecare environment.



At Risk

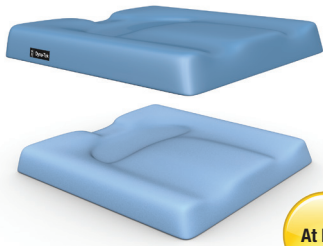
### Dyna-Tek<sup>®</sup> Pad Cushion

**Product Code**  
CUS0110001

**Weight limit:** 20 stone / 127kg

**Warranty:** 2 Years Cover /  
4 Years Foam

The Dyna-Tek<sup>®</sup> Pad Cushion has been created for users considered to be "At Risk" of pressure ulcer development. Dyna-Tek<sup>®</sup> Pad Cushion's design quality comprises of a specialist "castellated cut" CME foam surface, ensuring the reduction of heat & moisture build up whilst achieving maximum pressure re-distribution. Complete with a sewn, multi-stretch, vapour permeable cover and non – slip base, this economical product is ideal for use in a wheelchair, hospital or homecare environment.



### Dyna-Tek® Profile

**Product Code**  
CUS0510004  
**Weight limit:** 18 stone / 114kg  
**Warranty:** 1 Year

The Dyna-Tek® Profile Cushion provides effective postural management and pressure redistribution. Designed mainly for use in a wheelchair but equally applicable to that of a ward or homecare environment, Dyna-Tek® Profile provides the ultimate combination of pressure care and patient comfort in an economical solution.



### Transflo

**Product Code**  
Standard: CUS0910000  
Leisure: CUS0920000  
Heavy Duty: CUS0930000  
**Weight limit:**  
Leisure: 22 stone/140 kg  
Standard: 28 stone/178 kg  
Heavy Duty: 32 stone/ 203kg  
**Warranty:** 2 Years

The Transflo Cushion has been innovatively designed using a combination of high density foam and a unique silicone gel 'floatation' system. Incorporating two fluid-filled, vapour-permeable, multi-stretch sacs that are encased within a supportive, heavy-duty foam surround; the fluid is able to move between compartments as the cushion contours to the body's shape and position, redistributing pressure over the widest surface area possible.

For the full range of sizes available for each cushion please refer to the DHG Cushion Size Chart, available to download from [www.dhg-healthcare.com](http://www.dhg-healthcare.com)

## ACCESSORIES



### Dyna-Tek® Positioning Products

**Positioning Product System**  
1. POS0110001 (36 pairs per carton)  
2. POS0210001 (12 pairs per carton)

The Dyna-Tek® Heel Boot and Foot Protector are simple-to-use solutions that can help reduce the risk of pressure ulcers developing on the vulnerable heel area. Suitable for patients evaluated to be at "High Risk" of developing pressure damage, the Dyna-Tek Heel Boot and Foot Protector has been designed to offer patients comfortable and effective pressure redistribution.



### Dyna-Tek® Wedge

**Product Code**  
POS0310001

The Dyna-Tek® Wedge provides knee support without the aid of an electric profiling bed. The foam wedge prevents the patient from slipping down the bed, whilst reducing shear & friction forces on the ankles and vulnerable heel area, therefore providing improved pressure redistribution.





Moving Health Forward

PRESSURE ULCER PREVENTION

SAFE MOVING & HANDLING

SPECIALIST THERAPIES

BATHROOM SAFETY

SPECIALIST SEATING

RENTAL & SERVICE SOLUTIONS



DHG  
Withey Court, Western Industrial Estate  
Caerphilly, United Kingdom  
CF83 1BF

T: +44 (0) 845 459 9831  
F: +44 (0) 845 459 9832  
E: [info@directhealthcaregroup.com](mailto:info@directhealthcaregroup.com)



LIT-00026 Issue 8  
Date: November 2022

[DHG-HEALTHCARE.COM](http://DHG-HEALTHCARE.COM)