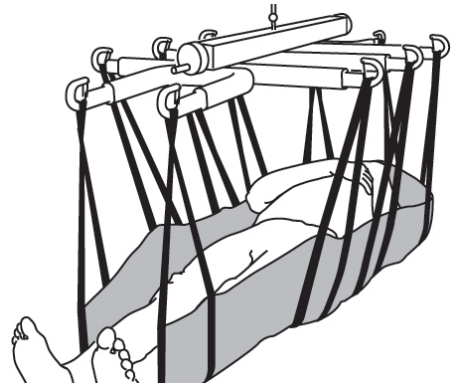
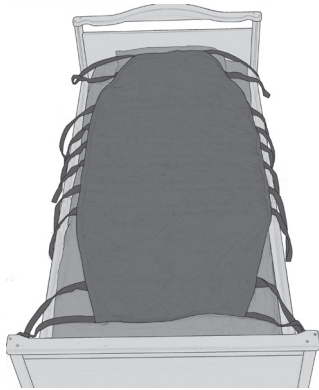


StretcherSling Disposable

SystemRoMedic™



SWL: 300kg/660lbs

StretcherSling Disposable is used in combination with a specially designed slingbar, StretcherBar, for horizontal lifting. It features ten suspension points, five on each side of the patient, which provide uniform support under the entire body. StretcherSling Disposable is designed to meet the need for transferring patients in a supine position. StretcherSling Disposable is made of a durable, disposable material, which means that it cannot be laundered. Instead, the sling is discarded when it becomes soiled or when the patient no longer needs it.

SystemRoMedic includes a wide range of functional, comfortable, high-quality slings that can be adapted for different types of lifting and for patients with different needs. The slings are available in several different materials and in sizes from XXS to XXL. All models are safe and very easy to use and are rated for lifting patients weighing up to 300 kg. The choice of model and material depends on the patient's needs and the transfer situation.



Functional inspection

Visual and mechanical inspection

Check the condition and function of the sling regularly. The sling must not be used if it has been laundered. Check to ensure that seams and material are free from damage. Check to ensure that fabric is not worn or faded. Apply load to the device and check to ensure that clasps, handles, etc. withstand heavy load. If there are signs of wear, the product must be discarded.



Always read the manual

Always read the manuals for all assistive devices used during a transfer.

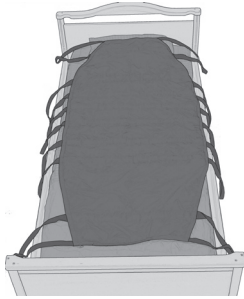
Keep the manual where it is accessible to users of the product.

Do not leave the patient unattended during a transfer situation.

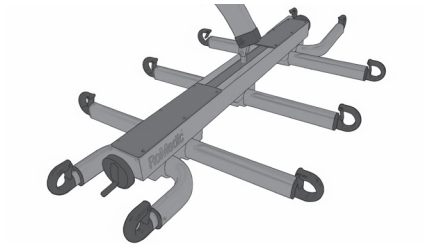
To prevent discomfort and the risk of the patient sliding out of the sling, trial fit the sling carefully. First, apply the sling's back loops to the slingbar, and then apply the leg support loops. Use a slingbar that has been tested.

The lowest allowable safe working load always determines the safe working load of the assembled system. Always check the safe working loads for the lift and accessories before use. Contact your dealer if you have any questions.

Product description StretcherSling Disposable and StretcherBar

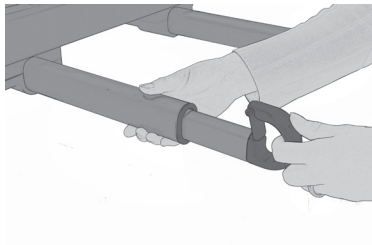


StretcherSling Disposable features a 177-cm-long fabric sheet with five lift straps that extend for one side to the other. This means that the weight of the patient is distributed over ten straps.

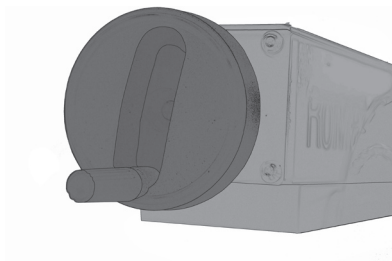


The StretcherSling Disposable has been designed for use exclusively with the StretcherBar. No other combinations are recommended.

The StretcherBar is made of aluminium. The mid-section has a built-in balance regulator and five aluminium profiles with lift hooks on each end. See manual for StretcherBar.



The lift hooks are equipped with safety latches and all lift arms can be adjusted according to the patient's width by lightly pulling them straight out before starting the lift. See manual for StretcherBar.



The mid-section of the StretcherBar contains a built-in balance regulator. This is regulated by rotating a dial on both sides to achieve the desired balance. See manual for StretcherBar.

The StretcherSling Disposable can only be applied and removed when the patient is lying down.

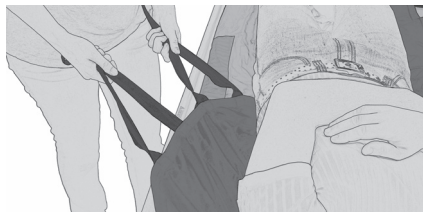


1

1. Turn the patient towards you. Place the StretcherSling Disposable so that the product label is facing the underlying surface and the sling's mid-section follows the patient's spine.

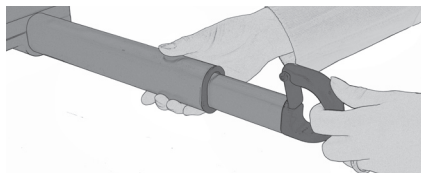
The upper edge of the StretcherSling Disposable should support the head.

Place the edge of the sling as far in under the patient as possible. Guide the loops under, so that you can reach them once you have turned the patient back onto the StretcherSling.



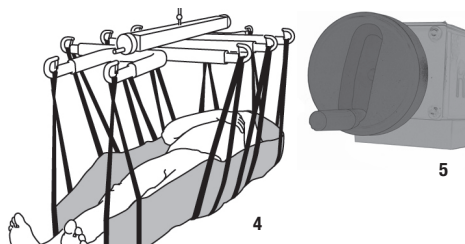
2

2. Turn the patient back onto the sling and pull the sling out from the other side with the help of the straps.



3

3. If necessary: Adjust the width of the StretcherBar to fit the patient's width by pulling out the lift hooks. Then, hook the lift loops onto the bar.



5

4. Raise the lift until all loops are fully extended. Pause to ensure that everything is as it should be before raising the patient clear of the underlying surface.

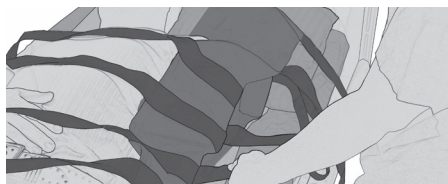
5. If the patient is not balanced after being lifted from the underlying surface, this can be corrected turning the balance regulator.

Removal of the StretcherSling Disposable:



1

1. Release all suspension hooks from the lift and move it out of the way. Turn the patient toward you and tuck the StretcherSling Disposable in under itself against the underlying surface.



2

2. The fabric slides against itself when you pull out the StretcherSling Disposable, after turning back the patient.

Alternative application of StretcherSling Disposable:

If the situation does not allow the patient to be turned, begin by placing two ReadySheets under the patient (from the bottom up) and then draw the StretcherSling Disposable between the smooth materials.

Material:

Non-Woven

Care of the product:

Read the product label.

Do not launder. Discard the product if it is soiled or if there is a need to use another product.



Contact your local distributor if you have any questions about the product and its use. See www.handicare.com for a complete list of distributors. Always make sure that you have the right version of the manual. The most recent editions of manuals are available for downloading from our website, www.handicare.com.

Handicare AB

Veddestav. 15. Box 640 Tel: +46 (0)8 -557 62 200

SE-175 27 Järfälla Fax: +46 (0)8-557 62 299

SWEDEN

Internet: www.handicare.com

E-mail: info@handicare.se

