

## Bed table

The Ready for life™ series includes a new, convenient and versatile bed table with many uses for both users and caregivers.

The bed table features stagelessly variable height adjustment, so that it can be used as a convenient bedside surface, or as a work surface over the bed or in front of an armchair or wheelchair.

The tabletop can be angled stagelessly for individual adaptation to facilitate use of a laptop, reading and other tasks. The raised perimeter prevents books, paper, etc. from sliding off the surface.



*For extra surface area, the bed table can be equipped with a bed table extension.*

The bed table is very stable and can withstand a load of 20 kg / 44 lbs. The tabletop is made of a durable plastic material that is easy to clean and disinfect.

The support frame has four free-rolling castors to enable easy transfer. Two of the castors have brakes that lock the table in the desired position.



### Bed table - features and advantages

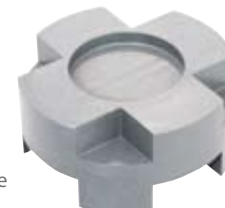
- ♥ Attractive, discreet design
- ♥ Stable, withstands a load of 20 kg / 44 lbs
- ♥ Flexible, easy to adjust height and incline
- ♥ Easy to move
- ♥ Easy to clean
- ♥ Many application areas

## Furniture raisers

Ready for life™ also features a double-sided furniture raiser that can be used to raise the height of beds and armchairs to a range of height positions.

Which end of the raiser faces up or down, respectively, depends on whether the bed frame has legs or runners and the height to which the bed is to be raised.

One end of the raiser has a raised cross with an 8 cm Ø round recess in the middle. This side is turned to face upwards for use with beds with round or square legs.



The bed legs are placed in the recess in the middle, which raises the bed by 60 mm.

By stacking several raisers on top of each other, the bed can be raised an additional 45 mm for each set of raisers.

The other end of the raiser has a recessed cross with an 8 cm Ø round recess in the middle. This end is turned to face upwards to enable raising of beds with round or square legs, or beds with runners.

The bed legs are placed in the recess in the middle, which raises the bed by 35 mm.



Runners are placed in the recessed cross, which has two different widths to enable optimal fit and stability. Beds with runners can be raised at 45 mm intervals.

By stacking several raisers on top of each other, the bed can be raised an additional 45 mm for each set of raisers.

The furniture raisers can also be used to tilt the bed by raising the height at one end. This is done by installing raisers on one end of the bed only. Never use more than one set of raisers to tilt a bed.

### Furniture raisers - features and advantages

- ♥ Discreet design
- ♥ Stable, load up to 500 kg/4 raisers - 1102 lbs/4 raisers
- ♥ Clever, versatile model
- ♥ Adaptation of bed height at intervals
- ♥ Fits most beds and armchairs
- ♥ Easy to use
- ♥ Easy to clean

## Product specification - Bed table



Bed table \_\_\_\_\_ with tabletop in white plastic \_\_\_\_\_ 300400310

Bed table extension \_\_\_ in white plastic \_\_\_\_\_ 300500310

Height, total \_\_\_\_\_ 65-100 cm / 25,6-39,3 inch.

Size, tabletop \_\_\_\_\_ 42.5 x 70 cm / 16,7 x 27,5 inch.

Size, Bed table extension \_\_\_\_\_ 36 x 25 cm / 14,1 x 9,8 inch.

Height, frame \_\_\_\_\_ 9 cm / 3,5 inch.

Weight \_\_\_\_\_ 8 kg / 17,6 lbs

Max. load \_\_\_\_\_ 20 kg / 44 lbs

Castors \_\_\_\_\_ Ø 5 cm / Ø 1,9 inch

Material, tabletop/extension \_\_\_\_\_ ABS plastic

Material, frame \_\_\_\_\_ Powder-coated steel

## Product specification - Furniture raisers

Raiser bed and chair \_ 4 pcs. furniture raisers in grey plastic \_ 300300003

Height, total \_\_\_\_\_ 70 mm / 2,7 inch.

Diameter, raiser \_\_\_\_\_ 150 mm / 5,9 inch.

Max, diameter, bed leg \_\_\_\_\_ 80 mm / 3,1 inch.




Max. width, bed runner \_\_\_\_\_ 59/69 mm - 2,3/2,7 inch.

Max. load \_\_\_\_\_ 500 kg/4 raisers - 1102 lbs/4 raisers

Material \_\_\_\_\_ PP plastic

## Raising measurements

By using 1-3 furniture raisers under each corner of the bed, the bed can be raised up to 150 mm depending on what side of the raiser is turned to face upwards.

	1X	2X	3X
	60 mm	105 mm	150 mm
	35 mm	80 mm	125 mm
	45 mm	90 mm	135 mm

# Ready for life™

# Ready for life™

## Ready for life™ – a new product series for improved quality of life for all

No one life is like the other. We all have different living conditions and during a lifetime, these conditions are constantly changing. Good and bad things happen to us all and, if we are lucky, we all get older, day by day.

Life, whatever it looks like, is a gift, not a given. And it should not just be about existing or surviving. Life should be lived. We don't have to be young, healthy or even independent to live. But we do have to be ready, that is willing and able, for life.

Functional disabilities, whether they are permanent or temporary conditions, ideally should not get in the way of anyone's ability to live a full and satisfactory life. The will comes from within, and when it comes to ability, Ready for life™ can improve the conditions by providing tools to better enable all people to live a fuller, more active life, every day of their lives.

Ready for life™ is a series of assistive devices that are designed to give users the best possible conditions for living an active life on a daily basis. The products have been specially developed to meet the conditions for home-care and institutional care settings. Ready for life™ offers the right quality, the right function and the right performance at the right price.

## Ready for life™ bedroom accessories

Ready for life™ bedroom accessories are simple, clever and easy-to-use products for a safe and comfortable bedroom setting.

This range of products offers flexible and cost-effective solutions to common and frequent problems and needs, both for users and caregivers. Ready for life™ bedroom accessories feature designs and functions that suit home-care and other home-like settings, but they really work just as well everywhere.



© Handicare AB - 120530 - www.handicare.com

## Bed table and furniture raisers

Ready for life™ bed tables and furniture raisers are clever and easy-to-use products for a safe and comfortable bedroom setting. The products, which have a discreet design, offer great flexibility and excellent possibilities for individual adaptation to different users and needs.



## handicare

Handicare AB  
Box 640, SE 175 27 Järfälla, SWEDEN  
Tel: +46 (0)8-557 62 200  
Fax: +46 (0)8-557 62 299  
www.handicare.com  
info@handicare.se