



Moving Health Forward

Rental Solutions

Bariatric & Standard Equipment Guide

Acute & Community Beds & Mattresses

Pressure Care Cushions

Specialist Seating

Walkers & Walking Frames

Transfer/Sit-to-stand Aids

Mobile Hoists

Slings & Sheets

Commodes/Shower Chairs

Gantry Systems & Hoisting Accessories

Bariatric Wheelchairs

Scale Systems

Emergency sales & rental (24/7/365)

0800 879 9289



Moving Health Forward

Vision

To advance the health of individuals with affected movement, utilising innovative and proven ways to enhance the certainty of care needed today and the care we plan to provide for tomorrow.

Mission

DHG constantly support our healthcare partners, and the people whose healthcare needs they serve, by providing solutions that improve the vital connections between movement and health. All leading to the best recovery outcomes and healthy independence in daily living.

Our Story

DHG is a global medical device company that supports efforts to move health forward by delivering innovative and leading solutions for individuals whose lives are impacted by reduced movement.

We strive to constantly support our healthcare partners, and the people whose healthcare needs they serve, working to keep improving the vital connections between movement and health, enabling accelerated recovery and healthy independence in daily living.

At DHG, we are passionate to work in close collaboration with healthcare professionals to enhance outcomes, lower the cost of healthcare, deliver efficiencies, and expand access to our solutions

Our Brands



Pressure Ulcer Prevention

DHG specialises in the manufacturing of pressure ulcer prevention solutions with a comprehensive portfolio of innovative, award-winning products including mattresses, cushions and overlays.

With significant experience in the provision of clinically proven, value for money solutions, customers benefit from a combination of innovative pressure care technologies, designed in partnership with leading clinical and healthcare establishments.

In 2016, Direct Healthcare Services' Intelligent Pressure Care Management won the prestigious Queen's Award for Enterprise in Innovation following the introduction of the Dyna-Form® Mercury Advance; a keystone hybrid mattress.



Safe Moving & Handling

DHG's SystemRoMedic range has extensive heritage in the safe movement and handling of users across the spectrum of care environments. Providing solutions for lifting systems and manual transfer aids, the SystemRoMedic portfolio enables safer working ergonomics for the carer, whilst providing clinical effectiveness for the user. The clinical focus of the SystemRoMedic looks to release more time back to care by providing a highly-experienced, trained moving & handling team who can assess for the most appropriate moving, handling, specialist seating, in-bed or out-of-bed solution to provide effective care.



Specialist Therapies

DHG's Specialist Therapies portfolio offers advanced technologies for use with avoidable harms.

Our Negative Pressure Wound Therapy (NPWT) offers intuitive, simple-to-use, cost effective solutions for the accelerated healing of chronic wounds.

With the knowledge that Venous Thromboembolism (VTE) is a global, life-threatening issue, DHG offer Intermittent Pneumatic Compression (IPC) solutions for use in the prevention of Pulmonary Embolism.



Bathroom Safety

Renowned for more than 80 years, DHG's Linido bathroom safety solutions provide increased independence, safety and comfort in bathrooms, showers and toilet areas across private and public environments, as well as in hospitals. DHG offers a wide range of safe, practical, durable and ergonomic aids with modern design; creating accessible, safe and aesthetic bathrooms.

Our bathroom safety products are extensively tested for their functionality, including safety testing as well as ergonomic use and comfort, to ensure to comfort of safety every day. The complete range provide users in any bathroom or toilet situation with as much autonomy as possible.



Rental & Service Solutions

Through DHG's Nightingale brand, we have over 20 years' experience in ad-hoc or contracted rental and servicing solutions that enable a focus on patient care across any operational budget. We offer a 24/7/365 rental service providing a range of pressure area care solutions, beds for acute and community environments, safe moving & handling equipment, specialist seating, and bariatric care equipment; ensuring that your patient receives the right care at the right time. To facilitate easier choice, we have designed a number of packages focusing on early discharge, single-handed care, rehabilitation, or capacity pressures.

With a network of nationwide, ISO 13485 accredited rental and service centres, we work closely with healthcare professionals to ensure our solutions are reliable, safe and effective. Our solutions are delivered by a highly experienced Technical Service team, who will provide on-site support and training during the delivery process.

Our ProServe® Service Solutions provide ISO 13485 compliant servicing options for the wide range of products your hospital or equipment service have on site. We offer a range of technical service packages designed to suit the needs of our customers in today's ever changing healthcare environment.

ēthos

EDUCATION PROGRAMME

As a global supplier of equipment that is designed to facilitate better health comes, accelerate patient recovery and provide easier daily living for the elderly, disabled or those providing care and support to them, DHG is acutely aware that for equipment to be used to its full potential, those using it must have an understanding of everything a piece of equipment can do and how it should be used.



The Ethos Education Programme underpins this theory by providing practical tips and techniques supported by theory-based learning for a wide range of people including those responsible for specifying, installing or using DHG equipment. The Ethos Education Programme provides access to 8 CPD accredited workshops that will encourage you to review current practices to ensure client and carer safety when involved with moving and handling tasks or assessing for a specialist seat. The Ethos Education Programme is designed to deliver a comprehensive overview of how equipment can be used to assist in single and multi-carer environments whilst giving you the opportunity to consider your individual circumstances and following on from the workshop, how you could reduce your risk of injury whilst simultaneously improving the moving and handling experience and dignity for those within your care.





Plus-size Care Management Webcast Series:

“Applying Innovative Systems In The Management of Plus-size Individuals”

Presented by Anita Rush

Learning Aim:

Delegates will have the opportunity to develop their knowledge base to enable effective management and implement safer systems of work for Plus-Size individuals.

During this Webcast, delegates will gain an understanding of:

- The global incidence of obesity and obesity related mortality
- Different terminologies (meadtric and bariatric), their influence on plus-size individuals body dynamics and their impact on normal body movement and subsequent moving and handling tasks
- The challenges of managing a plus-size individual and implementation of suitable systems to enable benefits both for the individual and the care providers
- The key elements involved in the risk and mobility assessments required for a plus-size individual
- How using an ergonomic system approach plus size interventions can enable best practice and harm free care
- How pivotal the discharge planning process and a cohesive communication channel across all stakeholders involved is to enable a safe discharge
- Complex cases that can be solved and safe systems of work implemented (case study)
- The need for a strategic approach to the management of plus size individuals

The Webcasts are split into three parts:

- Part I – Evidence Based Practice

- Part II – Risk Management of Plus-size Individuals

- Part III – Complexities of Plus-size Management

Anita Rush

M.Sc Health Ergonomics, Dip Health Care Studies, SRN Clinical Lead and Clinical Nurse Specialist Equipment

Anita is a highly experienced Clinical Lead Nurse Specialist for equipment provision across Berkshire. The role generates many complex patient assessments: including tissue viability, postural management, seating and manual handling for the population of Berkshire and beyond, especially in the field of Plus Size Management.

Anita has developed a competency-based training and education programme that enables a proactive approach to risk management. Sourcing solutions for patients with complex needs is difficult, but with good outcomes and you see an improvement in the patient’s quality of life then it is all worthwhile.

Anita has lectured for the Disabled Living Foundation, published a number of articles, has presented at many national and international conferences on the management Plus Size Individuals. Anita also delivers bespoke Plus Size Training sessions for Health and Social Services within the UK including Ireland.

Anita has co-authored two publications: Chapter 12, in ‘The Guide to the Handling of People, a Systems Approach’ – 6th edition reprinted May 2013, published by Backcare the charity for healthier backs and in collaboration with the National Back Exchange. The second publication ‘Moving and Handling of Plus Size People – an illustrated guide’ was published by the National Back Exchange in 2013. Anita is a member of the National Back Exchange.

BARIATRIC BED RANGE



Olympia Bariatric Bed (500kg SWL)

Acute Bariatric Width-Adjustable Bed Frame

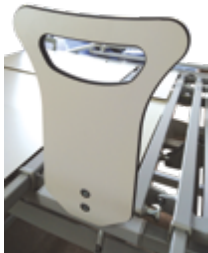
The Olympia Bariatric width-adjustable, profiling bed frame is fully compliant to the latest hospital bed standards. It can be used as a standard bed at 900mm and is expandable to 1100mm, 1200mm and 1300mm, with an extendable length to 2200mm. The Olympia Bariatric has a user friendly, quiet operation to assist with the provision of dignified care.

Order Code: 0111

Specifications:

- 78st/500kg SWL (68st/435kg max patient weight)
- Width adjustable from 900mm to 1300mm (with 1100 and 1200 options)
- Extendable length up to 2200mm

Profiling Positions



Raising Aid

Optimal support when getting in and out of the bed

Weight tested to be used as a handling aid.
Ergonomic solid laminate design.

Order Code: 1113 (Included with bed by request)



Linet Image 3 Bari Bed (320kg SWL)

The Image 3 electrically adjustable hospital bed respects growing demands of patients and nursing staff. An extra low patient positioning (patient surface height is 28cm) significantly reduces the risk of injuries in case of falling out of the bed, especially during the night. The Ergoframe® system extends the mattress platform in the pelvic area and reduces the pressure load on the tissues in this region when a patient is positioned in the cardiac chair position. The electrical functions of the bed can be simply locked using the Function Lock. Clear access is also given under the bed frame for mobile hoists. The bed has a user friendly and quiet operation to assist with the provision of dignified care.

Order Code: 0116

Specifications:

- 50 stone/ 320kg SWL
- Frame width: 1100mm

Profiling Positions





Pro Axis 2 (400kg & 500kg SWL)

Expandable Bariatric Bed with Integrated Weigh Scale

The Pro Axis 2 is a 4-section (3 jointed, 1 fixed centrally), adjustable, profiling bed with integrated patient weighing system. The mattress platform can be adjusted to three widths, 1020mm, 1120mm and 1220mm, whilst also featuring a pull-out bed lengthener allowing for a total extension length of 1800mm.

As standard, the bed is equipped with a push-button handset for the patient and with an operator control handset for the exclusive use by specialised personnel with enables back rest adjustment, knee break adjustment, height adjustment, cardiac chair and massage position, plus Trendelenburg and reverse-Trendelenburg push-buttons.

The Precision Class III weighing system features four sensors, integrated into the structure of the bed, at the four corners to limit sensor deflection and stress, granting durability and better load distribution. The fixed support display, with rotating viewer, is battery powered allowing for a 4-hour operating time without a power connection.

Order Code: 0113

Specifications:

- 63st/400kg & 78st/500kg SWL
- Width adjustable from 1020mm to 1220mm (with 1220 option)
- Extendable length up to 2180mm

Profiling Positions



XXL Xpress Bariatric Care Bed (270kg SWL)

The XXL Xpress medical bariatric bed combines both the form of a modern design with the functionality needed to assist carers in giving superior levels of care to patients. It helps to reduce the risks associated with the manual handling of this patient group. The extra width provides a patient surface that is 4 feet in width or more (120mm or 140mm) in a bed that can be easily transported in and out of community environments.

Order Code: 0110

Plus mattress option if required.

Specifications:

- 43 stone/270kg SWL
- 2000mm (L) extendable to 2200mm (L) x 1200mm (W)

Profiling Positions



STANDARD BED RANGE

Compatible with foam, hybrid/ dynamic, turn assist and low air loss mattress options.



Lago Hi/Lo Acute Care Bed (230kg SWL)

The Lago Hi/Lo Acute Care Bed is a perfect symbiosis of safety and comfort. A low bed position of $\pm 25\text{cm}$ reduces the risk of falling to an absolute minimum, whereas the ergonomic working height of $\pm 80\text{cm}$ guarantees efficient care.

Order Code: 0112

Specifications:

- 32 stone/230kg SWL
- Height adjustment: 250mm–800mm

Profiling Positions



Acute Floor Bed (200kg SWL)

The Acute floor bed is a fully profiling bed frame offering the lowest frame height currently available of 100mm to greatly assist with patients that can be mobilised in and out of bed and for vulnerable patients that are prone to falls.

Clear access is also given under the bed frame for mobile hoists. The Acute bed has a user friendly and quiet operation to assist with the provision of dignified care. Comes with integral safety rails and removable head/footboards.

Order Code: 0112STD

Specifications:

- 31 stone/200kg SWL
- Height adjustment: 100mm–725mm

Profiling Positions





Olympia Hospital Standard Acute Bed (250kg SWL)

The integrated bed extension provides the option to extend the length of the bed by 20cm. Functional and easy to operate manually. The hand switch is equipped with all functions to position the patient in their desired seating, lying or reading position. All head and foot panels can be removed requiring no tools. Easy-to-use high low pedal. The high/low supports guarantee an excellent bed stability at all heights. The bed can be easily adjusted between 38cm and 78.5cm (with castors \varnothing 125mm), which makes it easier to get in and out of the bed or to treat a patient.

Order Code: 0131

Specifications:

- 39 stone/250kg SWL
- Dimensions 2120mm (L) x 1000mm (W)

Profiling Positions



Proteus Community Bed (200kg SWL)

The easy to assemble Proteus electric community bed, is easy to use and its space saving storage facility is of particular interest to Nursing, Care Home and Community environments due to its unique foldaway design. The clearly marked handset is simple to use for both carers and end users alike. The Proteus can be supplied with optional 3-bar aluminium wood effect full length side rails for extra security. The electric backrest raises to an angle of 72°.

Order Code: 0130

Specifications:

- 31 stone/200kg SWL
- Dimensions 2020mm (L) x 1020mm (W)
- Max. height position 655mm
- Lowest height position 245mm

Profiling Positions





Super Low Single Panel Bed (180kg SWL)

The Super Low Single Panel nursing bed offers an ultra-low platform height of just 10cm from the floor. It is an electrically adjustable wooden bed with adjustable backrest and footrest sections. The easy to use handrest features a safety stop mechanism to help prevent entrapment under the bed frame when lowering below 30cm.

In order to continue lowering the bed to the optimum 10cm the user must press a separate button. In addition to an Auto-Contour Chair function that allows for effortless positioning and prevents the patient sliding down the bed, the Super Low Single Panel also features auto-regression, ensuring minimum pressure is placed on the sacrum region when the bed is profiled. The Super Low also has the added benefit of an integral extending section that allows the bed platform to be increased in length by 15cm.

Order Code: 0132

Specifications:

- 28 stone/180kg SWL
- Dimensions: 2020mm (L) x 1030mm (W) or 2350mm (L) x 1030mm (W) (when integral extension piece is used)
- Max. height position 700mm
- Lowest height position 100mm

Profiling Positions



BARIATRIC SUPPORT SURFACES RANGE

Intelligent®
Pressure Care
Management



Dyna-Form® Mercury Advance Bari WA (380kg Weight Limit)

A width-adjustable mattress replacement system that can deliver both pressure redistribution in static mode and pressure relief in dynamic mode, the Dyna-Form® Mercury Advance Bari WA is designed for use with patients at Very High Risk of developing pressure damage.

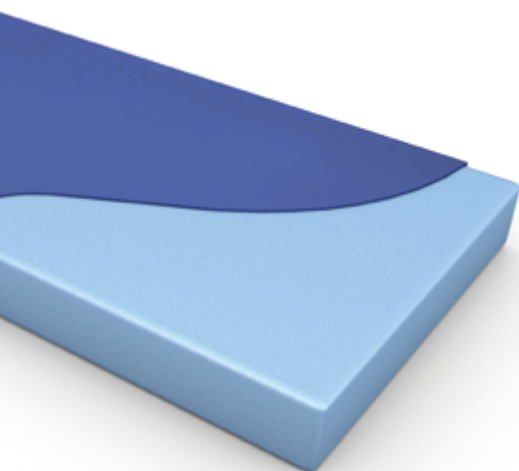
Offering high levels of patient comfort, this unique system has the facility to 'step up' to that of a dynamic mattress when clinically required. Similarly the mattress function can be 'stepped down' as the patient's condition improves. Can be used at 900mm, 1100mm, 1200mm and 1300mm widths.

Mattress Order Code: 0415

Pump Order Code: 1209

Risk Category: Very High Risk

Dimensions: 1980mm (L) x 900–1100/1200–1300mm (Width Adjustable) x 150mm (D)



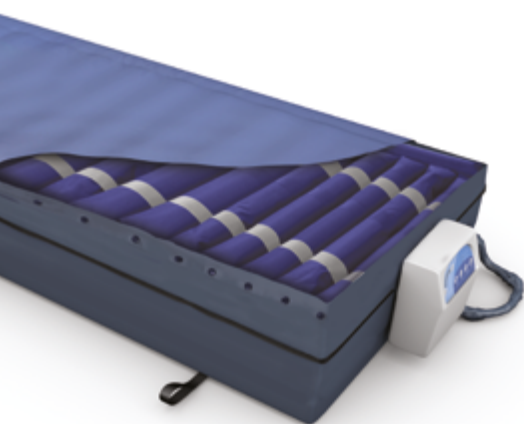
Dyna-Form® Maximus (413kg Weight Limit)

Specifically designed to meet the needs of bariatric patients up to 413kg/ 60 stone. Its finest quality Combustion Modified Ether (CME) foam type and construction is designed to support the weight of heavier patients, prevent 'bottoming out' and offer effective pressure reduction for users.

Mattress Order Code: 0409

Risk Category: High Risk

Dimensions: 1980mm (L) x 1200mm (W) x 150mm (D)



Dyna-Form® Low Air Loss (453kg Weight Limit)

The Dyna-Form® Low Air Loss system is an effective True Low Air Loss system designed for patients with sensitive skin and at Very High Risk of developing pressure ulcers. Incorporating a high performance blower, the Dyna-Form® Low Air Loss system delivers true Low Air Loss therapy and excellent microclimate control with an evenly distributed flow of cooling air maintained across the mattress surface to assist in managing the heat and humidity of the skin.

Mattress Order Code: 0403

Pump Order Code: 1203

Risk Category: Very High Risk

Dimensions: 2000mm (L) x 900/1100/1200/1300mm (W) x 250mm (D)



Dyna-Form® Power-Turn Elite Lateral Rotation Mattress (453kg Weight Limit)

Designed for challenging bariatric patients that have very little or no mobility, the Dyna-Form® Power-Turn Mattress System combines two clinically effective therapies: Lateral Rotation and True Low Air Loss in a portable system. A full, Left or Right Turn Mode is offered with either a 25° Small Turn or a 40° Big Turn.

Order Code: 0413

Risk Category: Very High Risk

Dimensions: 2000mm (L) x 1100mm*/1200mm** (W) x 250mm (D)

Important Note: *1100mm (W) has a 363kg Weight Limit,
**1200mm (W) has a 453kg Weight Limit



Carital® Bario (350/400kg SWL)

The Carital® Bario is a dynamic, anti-deformation mattress replacement system. Offering high levels of patient comfort, the mattress utilises continuous low pressure to provided pressure redistribution through high levels of immersion and envelopment.

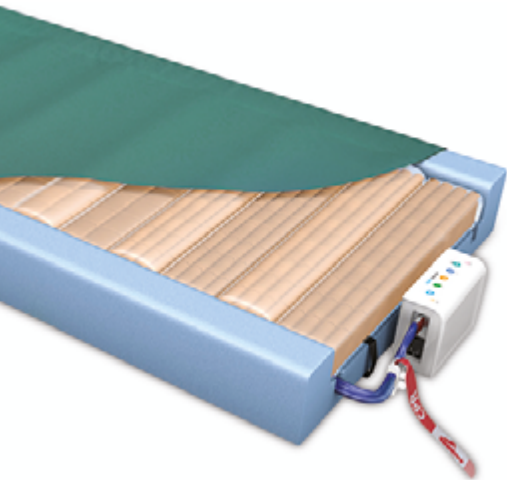
The Carital® Bario's air cell structured minimum pressure mattress maximises the contact area, whilst minimising the contact pressure and tissue deformation. Automatically adjusting to the user, the Carital® Bario is for patient groups that cannot tolerate movement, but are still at Very High Risk of pressure ulcer development.

Order Code: 0414

Risk Category: Very High Risk

Dimensions: 8500/ 9000mm (w) also available as 12,000mm wide with foam bolsters
Also do a 120cm wide, but it has foam bolsters 130mm (h)
85cm wide = 350kg SWL 90+ wide = 400kg SWL

STANDARD SUPPORT SURFACES RANGE



Dyna-Form® SMARTresponse®

With the focus on clinical choice, SMARTresponse® empowers healthcare providers to achieve earlier intervention in pressure ulcer prevention, offering easy implementation for individuals at risk of developing pressure ulcers, helping to ensure best use of clinical resources to deliver more responsive patient care, improve patient outcomes and contribute to cost-savings.



Auto Start

Selecting Auto Start allows the system to automatically 'step up' care when no patient movement has been detected for a period of time.



Alert Me

Alert Me sends a message directly to the care provider when no patient movement has been detected for a period of time. This provides the carer with the ability to remotely 'step up' care from anywhere.



Bed Exit

Bed Exit can be activated at any point to detect bed exit events. In the event that a Bed Exit is detected, an alert is sent directly to the care provider.

Order code: 0714

Risk category: Very High Risk

Dimensions: 1980mm (L) x 900–1100/1200–1300mm (Width Adjustable) x 150mm (D)



Intelligent
Pressure Care
Management

Dyna-Form® Mercury Advance SMARTcare® (254kg Weight Limit)

An innovative solution in the prevention and treatment of pressure ulcers offering effective dual therapy in a single surface by combining advanced, clinically proven technologies previously only available in separate hybrid surfaces. The advanced air displacement technologies incorporated into a unique 4 zone configuration provide more effective pressure redistribution in response to patient body weight and movement.

The unique 'air only' heel zone effectively off loads pressure on the heel area. When used in powered/ dynamic mode Mercury Advance SMARTcare delivers pressure relief via a series of connected alternating foam and air cells that can be operated on either Low or High Pressure.

Order Code: 0417

Risk Category: Very High Risk

Dimensions: 2000mm (L) x 850mm (W) x 200mm (H)



Dyna-Form® Air Suresse (254kg Weight Limit)

High dependency dual therapy mattress replacement system, providing alternating and continuous low-pressure therapy. The Dyna Form Air Suresse is manufactured with a dual compressor system, allowing suitable application for much larger, complex patients.

The 'Soft to Firm' function allows true patient comfort from hypersensitive lightweight to heavier patients including those who are of Very High Risk of pressure ulcer development and existing damage. The unique hinged mattress cell construction provides small and deeper cell designs for the heel and sacral areas, allowing for use on the most challenging patient circumstances.

At ease within any high dependency and homecare settings. Dynamic mattress replacement system equipped with a true fault diagnostic system.

Order Code: 0416

Risk Category: Very High Risk

Dimensions: 2000mm (L) x 850mm (W) x 200mm (H)



Dyna-Form® Air Pro-Plus (178kg Weight Limit)

Dynamic mattress replacement system equipped with a true fault diagnostic system suitable for acute or homecare settings. The pump provides ease of use, whilst removing the risk of selecting the wrong pressure setting.

The pressure adjustment system is suitable for patients up to and including 178kg and that of Very High Risk of pressure ulcer development – with a reliable cycle time of ten minutes, the utmost consideration towards pressure ulcer management is achieved, minimising patient nausea.

Order Code: 0418

Risk Category: Very High Risk

Dimensions: 2000mm (L) x 850mm (W) x 160mm (H)



Dyna-Form® Power-Turn Elite Lateral Rotation Mattress

(220kg Weight Limit)

Designed for challenging bariatric patients that have very little or no mobility, the Dyna-Form® Power-Turn Mattress System combines two clinically effective therapies: Lateral Rotation and True Low Air Loss in a portable system. A full, Left or Right Turn Mode is offered with either a 25° Small Turn or a 40° Big Turn.

Order Code: 0413STD

Risk Category: Very High Risk

Dimensions: 2000mm (L) x 1100mm*/1200mm** (W) x 250mm (D)



Quattro® Plus

Suitable for all patient types, the Quattro® Plus mattress system combines an active 1-in-4 cell cycle, with TISSUEgard, Ortho-Differential Support and a multistretch cover to provide patients with pressure relief to prevent and manage patients at risk of or with existing pressure ulcers.

Order code: 0301

Risk category: High-Very High Risk

Dimensions: 1950mm (L) x 880mm (W) x 180mm (D)



Quattro® Acute

The Quattro® Acute mattress system uniquely offers DEEP CELL THERAPY™, combing 1-in-4 alternation with continuous low pressure to provide pressure ulcer prevention and treatment in the most dependent of patients.

Order code: 0302

Risk category: High-Very High Risk

Dimensions: 1950mm (L) x 900mm (W) x 180mm (D)



Carital® Optima

The Carital® Optima is a dynamic, anti-deformation mattress replacement system. Offering high levels of patient comfort, the mattress utilises continuous low pressure to provided pressure redistribution through high levels of immersion and envelopment.

Order code: 0303

Risk category: Very High Risk

Dimensions : 70/75/80/85/90cm (W) x 200/210/220/230cm (L) x 13cm (H)

BARIATRIC CUSHION RANGE

Intelligent[®]
Pressure Care
Management



Dyna-Form[®] Mercury Advance Bari Alternating Air Cushion (318kg Weight Limit)

The Dyna-Form[®] Mercury Advance Bari Alternating Cushion is a dynamic replacement seating system, combined with the benefits of modern foam technology. It is specifically designed for patients considered to be at Very High Risk of pressure ulcer development.

Offering high levels of patient comfort, this unique system has the facility to 'step up' to that of a dynamic cushion when clinically required. Similarly, the cushion function can be 'stepped down' as the patient's condition improves.

25" seat width
Order Code: 1101

28" seat width
Order Code: 1101

30" seat width
Order Code: 1101

32" seat width
Order Code: 1101

34" seat width
Order Code: 1101

30" seat width
Order Code: 1101

STANDARD CUSHION RANGE

Intelligent[®]
Pressure Care
Management



Dyna-Form[®] Mercury Advance (152kg Weight Limit)

The Dyna-Form[®] Mercury Advance Alternating Cushion is a dynamic replacement seating system, combined with the benefits of modern foam technology. It is specifically designed for patients considered to be at "Very High Risk" of pressure ulcer development.

Offering high levels of patient comfort, this unique system has the facility to "step up" to that of a dynamic cushion when clinically required. Similarly, the cushion function can be 'stepped down' as the patient's condition improves. A higher maximum weight capacity, up to 24 stone /152kg, allows the product to meet the challenges of heavier patients.

19" seat width
Order Code: 1101

22" seat width
Order Code: 1101

BARIATRIC SEATING RANGE



Static Bedside Chair

Comes with drop arms and height adjustment.

28" seat width (318kg SWL)
Order Code: 0502

32" seat width (318kg SWL)
Order Code: 0501



Fero Obesitas Bedside Mobile Chair

A versatile bedside chair with electric backrest recline operation and drop arms. This chair can also be used as a patient transfer chair as it comes with larger castors, rear handle and a footplate.

30" seat width (318kg)
Order Code: 0507



Pro-Axis Riser Recliner Chairs

Hoist compatible – Option to hire integral Mercury Advance with riser recliner

These heavy duty chairs are ergonomically designed and offer pressure relieving seats, footrests and waterfall backs with full electric rise and recline functionality. All chairs are also compatible with mobile hoists and stand aids. Adjustable seat depth up to 5" with dynamic back rest adjustment to accommodate different body shapes. The new 34" seat width has a SWL of 70st/444kg.

25" seat width (318kg SWL)
Order Code: 0504

31" seat width (318kg SWL)
Order Code: 0503

28" seat width (318kg SWL)
Order Code: 0504

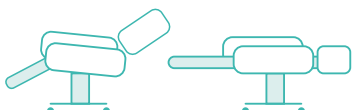
34" seat width (444kg SWL)
Order Code: 0503



Hi-Lo Tilt-In Space Bariatric Day Chair (300kg SWL)

Offering the capability and functionality of a bed with full electric operation and a high dependency castellated foam surface. This chair is designed to be used as the first step from bed to chair for high dependency patients and allows for easier bed to chair lateral transfers. Can be used to assist with sit to stand exercises during early stages of a patients rehabilitation. Large castors and a rear handle also allow for patient transportation.

Order Code: 0508



STANDARD SEATING RANGE

Kirton specialist seating is manufactured to include clinically proven pressure relieving seat modules – Reflexion foam or Dyna-Tek Intelligent Air.



Pro-Axis Riser Recliner Chairs

Hoist compatible – Option to hire integral Mercury Advance with riser recliner

These heavy duty chairs are ergonomically designed and offer pressure relieving seats, footrests and waterfall backs with full electric rise and recline functionality. All chairs are also compatible with mobile hoists and stand aids. Adjustable seat depth up to 5" with dynamic back rest adjustment to accommodate different body shapes.

19" seat width (120/140kg SWL)
Order Code: 0505

22" seat width (120/140kg SWL)
Order Code: 0505



G-2 (180kg SWL)

For the semi- and non-ambulant user with high posture and pressure care needs, the G-2 features electric tilt-in-space action and built-in, helical-motion lateral supports.

Order Code: 0708



Manual



Powered



Regulated Motion



Tilt-in-Space



Articulating Legrest



Florien II (180kg SWL)

The Florien II is a dynamic and highly mobile seating system that enables greater independence by promoting correct posture and facilitating a supportive, comfortable seated position. Featuring manual tilt-in-space, leg rest elevation and removable side arms for easier hoist access and side transfers.

Available with lateral support.

Order Code: 0707



Manual



Tilt-in-Space



Articulating Legrest



Florien Elite (160kg SWL)

Florien Elite is ideal for ambulant, semi-ambulant and non-ambulant users as well as in multi-user environments. The unique upholstered arms float across the seat to achieve appropriate seat width for each user. The arms also can swivel backward to allow a side transfer or easier hoist access.

Order Code: 0717



Manual



Tilt-in-Space



Back Angle Recline



Articulating Legrest



Duo-2 Major (160kg SWL)

The Duo-2 Major is designed for the non-ambulant user with profound posture and pressure care needs. An electric 50° tilt-in-space and dynamic features provide extensive positioning and postural management for individuals who are at risk of developing an unconventional body shape. Users who are unable to maintain a midline position are assisted by the off-set midline lateral supports.

Order Code: 0712



Manual



Powered



Regulated
Motion



Tilt-in-Space



Back Angle
Recline



Articulating
Legrest



Seat Height
Adjustment



BARIATRIC WHEELCHAIR RANGE

A range of folding and fixed width wheelchairs available to aid patient mobilisation.

20" tilt in space wheelchair (125kg)

Order Code: 0606

30" folding wheelchair (318kg)

Order Code: 0606

28" fixed width wheelchair (325kg)

Order Code: 0606

28" folding wheelchair (318kg)

Order Code: 0606

COMMODOES / SHOWER CHAIRS – BARIATRIC RANGE



Freeway T100 Bariatric Shower Chair

The Freeway T100 Bariatric Shower Chair is suitable for a variety of applications for bariatric clients. The T100 benefits from increased diameter tubing, special heavy duty castors, heavy duty footrests with height adjustable heel supports which are removable and swing away.

Other commodes/showering accessories available.

Standard Commodes available from RDR: £10

28" seat width (350kg)

Order Code: 0706

30" seat width (350kg)

Order Code: 0706

32" seat width (350kg)

Order Code: 0706

COMMODES / SHOWER CHAIRS – STANDARD RANGE



Combi-chair Commode (150kg SWL)

The tilting Combi commode/shower chair is an assistive device allowing the user to sit down safely and comfortably, in an upright or in a reclined position, during toileting or showering. Also available with powered tilt.

Order Code: 0580

WALKING FRAMES AND WALKERS – BARIATRIC RANGE



Walking Aid (318kg SWL)

Height adjustable.

Order Code: 0902



Stand Tall XXL Walking Aid (325kg SWL)

Height adjustable.

Order Code: 0901



Bure XL (240kg SWL)

StandTall walker with extra space and strength for bariatric users.

Order Code: 0903

WALKING FRAMES AND WALKERS – STANDARD RANGE



Bure Rise & Go DB (150kg SWL)

A walker enhanced with a patented power rise function.

The electric power rise function allows Bure Rise & Go acts as a combined stand-up, mobility and walking aid.

Order Code: 0596

TRANSFER / SIT-TO-STAND AIDS – BARIATRIC RANGE



ReTurn7600 (205kg SWL)

Assists with sit-to-stand and patient rehabilitation.

Order Code: 0904

TRANSFER / SIT-TO-STAND AIDS – STANDARD RANGE



ReTurn7500i (150kg SWL)

Enables safe, natural support for a sit-to-stand and transfer. Can also be used to facilitate repositioning further back in a chair or wheelchair or used as a rehabilitation device.

Order Code: 0905



ReTurn7400 (150kg SWL)

ReTurn7400 has a low rising ladder that is ideal for shorter adults and children. It also works well in special care situations, such as in an x-ray unit.

Order Code: 0906



Mover Aqua (180kg SWL)

Transfer platform developed to provide smooth, convenient transfer indoors/on flat surfaces. The Mover Aqua has been designed with PU cushions together with stainless steel solutions allowing it to be used in showers.

Order Code: 0510



QuickMove (170kg SWL)

For users with impaired balance and reduced strength in their legs. The QuickMove supports and activates the user when rising to a standing position. The user must have some strength in their arms to actively participate in the transfer.

Order Code: 0511



MiniLift160 Classic & ThoraxSling (160kg SWL)

A compact, mobile sit-to-stand lift to gently assist the user when rising from a sitting to a standing position. Combined with re-useable ThoraxSling, the user is supported under the feet, at the front of the lower legs and across their back.

Order Code: 0512



MiniLift200 & ThoraxSling (200kg SWL)

A mobile sit-to-stand lift to gently assist the user when rising from a sitting to a standing position. Combined with re-useable ThoraxSling, the user is supported under the feet, at the front of the lower legs and across their back.

Order Code: 0513

MOBILE HOISTS – BARIATRIC RANGE



Eva600EE Mobile Hoist (270kg SWL)

A versatile mobile hoist, complete with a SlingBar and with electrical base widening for users weighing up to 270kg/ 600lbs. Eva600EE is strong and stable, yet lightweight.

Order Code: 0515



Liko Viking XL Mobile Hoist (300kg SWL)

Includes re-usable sling

An increasing need for lifting heavy patients in different care situations led to the development of a mobile lift with high lifting capacity, made of aluminium to be as easy to manoeuvre as possible. This hoist comes with patient stability bars allowing for use as a rehabilitation frame with the Lift Pants as an accessory (please see accessories).

Order Code: 0601

MOBILE HOISTS – STANDARD RANGE



Carina350EE Mobile Hoist (165kg SWL)

Includes re-usable sling

Mobile hoist with manual or electric base widening, fitted with SlingBar M. Low leg option also available.

Order Code: 0550



Eva450EE Mobile Hoist (205kg SWL)

Includes re-usable sling

A versatile mobile hoist, complete with a SlingBar and with electrical base widening for users weighing up to 205kg/450lbs. Eva450EE is ideal lifting in connection with transfers to and from the floor, chair or bed, as well as for horizontal lifting and gait training.

Order Code: 0514



Line200 (200kg SWL)

The patented and intuitive e-sense drive makes it possible to effortlessly move the Line200 lift in any direction, preventing physical strain to make work easier and healthier for healthcare professionals. The Line200 is equipped with ergo-feedback to alert the user when too much force is used to move the lift. The live feedback helps users to work within ergonomic guidelines and directly contributes to preventing physical overload.

Order Code: 0620

GANTRY SYSTEMS – BARIATRIC RANGE



Liko Ultra Twin Gantry Hoist (400kg SWL)

Includes re-usable sling

With a very high lifting capacity this gantry hoist has two lift motors that work together to meet very high demands. The Ultra Twin not only lifts and transfers, it also helps position the patient in sitting, semi-reclining or horizontal positions. Adjustable width span of 2m, 2.5m and 3m available.

Order Code: 0602

Specifications:

Total Height 2270mm – 2570mm

HOISTING ACCESSORIES – BARIATRIC RANGE



Liko Ultra Twist Plate (500kg SWL)

For use with Gantry Hoist only

Allowing for safe patient rehabilitation between the span of the gantry hoist system with 360 degree rotation.

Order Code: 1115

GANTRY SYSTEMS – STANDARD RANGE



Castor Gantry and RiseAtlas 450 Ceiling Lift (205kg SWL)

Castor gantry is a safe, high-performance and portable freestanding gantry which, in combination with a 3m rail and RiseAtlas450 lift, functions as a stationary lift system. Castor gantry is an ideal solution for occasional lifting needs in a specific location, or where it is not possible to install a permanent rail system on the ceiling.

Order Code: 0516

Specifications:

Total Height 2000mm – 2400mm

Lifting Range 1920mm – 2270mm



Mobile Flex 2 Post Gantry Hoist (275kg SWL)

Includes re-usable sling

The mobile gantry combined with Ergolet's innovative Luna overhead lift, is a simple and functional lifting system and the ideal choice for either home care or institutional use. The mobile gantry provides a lifting capacity up to 275kg thus utilising the full range of the Luna lifting unit.

Order Code: 1115

Specifications:

Total Height 1775mm



SLINGS – BARIATRIC RANGE

BariVest (300kg/570kg SWL)

For use with a Gantry or Mobile Hoist

Can be used with a gantry system or mobile lifts with a four-point spreader bar for rising, standing training and gait training. Available in XXXL (recommended user weight: 180-300kg) or XXXXL (recommended user weight: 250-570kg).

Order Code: XXXL: 0541 XXXXL: 0542



Liko Ultra Lift Pants (500kg SWL)

For use with a Gantry or Viking XL Mobile Hoist

Lift Pants can be used with an overhead lift or with a mobile lift with sufficient lifting height allowing for safe patient rehabilitation. Available in XXL or XXXL.

Order Code: 0604



SLINGS – STANDARD RANGE

HighBackSling (300kg SWL)

Polyester. Available in sizes: XXS, XS, S, M, L, XL & XXL.

Order Code: 0570



WalkingVest (300kg SWL)

For rising and gait training with a stationary or mobile lift. Available in sizes: XXS, XS, S, M, L, XL & XXL.

Order Code:

XXS: 0530 **XS:** 0531 **S:** 0532 **M:** 0533 **L:** 0534 **XL:** 0535 **XXL:** 0536

SLIDING SHEETS



WendyLett Fitted Base Sheet 1641 (300kg SWL)

Intended for users who have difficulties turning in bed. The smooth and silky central part enables turning with minimal effort. Sliding sideways is made easy without risk of sliding off the bed by the anti-slip material at both sides of the sheet. The material also prevents the user from sliding down in bed.

Order Code: 0561

Specifications:

900mm (W) x 2000mm (L)



WendyLett4Way with Handles 1657 (300kg SWL)

Sliding drawsheet with 7 handles. WendyLett4Way is placed on top of a WendyLett base sheet. WendyLett4Way has an anti-friction material on the underside and the combination of these two WendyLett sheets allows for multidirectional moves in bed. Procedures such as turning in bed, moving higher up/lower in bed or re-adjusting a user while lying becomes simple to achieve with this combination, even with the heavier or passive user.

Order Code: 0562

Specifications:

1400mm (W) x 1900mm (L)

SHEETS



SafeHandlingSheet

For horizontal lifting and positioning with a two-point spreader bar

Available in sizes L polyester (300kg SWL), XL polyester (400kg SWL) and XXL polyester reinforced (570kg SWL).

Order Code: L: 0521 XL: 0522 XXL: 0523

POWERED TURNING AID



VENDLET Standard (250kg max user weight)

The VENDLET Standard is a patient transfer aid for turning and repositioning patients in bed. The assistive device makes it possible to perform a gentle and smooth repositioning of the patient, which requires a minimum of strain and effort of healthcare staff.

This powered turning system is a fully automatic transfer aid that is used to turn and reposition clients in bed.

Order Code: 0201



VENDLET V5S (200kg max user weight)

The VENDLET V5S is an automatic patient transfer aid for turning and repositioning patients in bed. The assistive device makes it possible to perform a gentle and smooth repositioning of the patient, which requires a minimum of strain and effort of healthcare staff. The transfer aid improves workplace health and safety, provides gentle and calm care for the client, reduces the risk of pressure ulcers, saves time and resources and much more.

Order Code: 0202



VENDLET V5S Speed Adjust (200kg max user weight)

The VENDLET V5S Speed Adjust is equipped with a 3 x speed control. This means that the speed can be reduced to 75% or 50% of the regular speed, enabling the system to be sympathetic to users who may be anxious or easily disturbed by quick movements. It can also be an advantage for employees who are not used to commonly using VENDLET.

Order Code: 0203



VENDLET V5S+ Bari (400kg max user weight)

VENDLET V5S+ Bari is the bariatric model intended for heavier weight users, with a maximum user weight of 400kg. The VENDLET V5S+ Bari is similar in design to the VENDLET V5S Speed Adjust, but has stronger motors to enable the higher maximum user weight. VENDLET V5S+ Bari operates as integrated bed rails, and has speed adjust.

Order Code: 0204

LIFTING CHAIRS

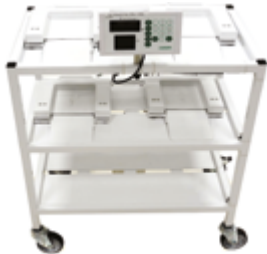


Raizer II

The battery-operated mobile lifting chair Raizer II helps a fallen person up to an almost standing position in a few minutes. The aid can be operated by only a single assistant, and it requires limited physical effort from the operator aside from a helping hand.

Order Code: 2201

CLIENT WEIGHING SERVICE RANGE



We can offer individual equipment assessments for beds, pressure care systems, seating, hoisting and patient/client mobilisation when accompanied by a Clinician. In addition to this we can also offer a patient/client weigh service. Please enquire for more information.

Independent Bed Scale System (1000kg SWL)

Class III Compliant

A versatile low profile system allowing for patient weighs on virtually any bed frame. Comes with an integral trolley for ease of transportation. Simple to use with BMI function.

Order Code: 0802



M200 Chair Scales (300kg SWL)

Class III Compliant

Heavy duty wheeled chair scales with a high capacity wider seat, hinged armrests and foot plates. This chair allows for dignified patient weighs with a simple to use display unit which includes a BMI function.

Order Code: 0803



Ramped Foldaway Scale System (300kg SWL)

Class III Compliant

Suitable for wheelchair or standing weighs. Transportation wheels and foldable for storage.

Order Code: 0804

TRANSPORT TROLLEY



Inthes Trolley (240kg SWL)

Designed for safe transport of patients between rooms. The safety side rail folds away quickly and easily to provide a broad and flat surface to lie one. A raising backrest and profiling knee break help to achieve postural comfort whilst the platform tilt helps to manage aspiration and blood pressures. The large wheels make for easy tolling and have convenient brake pedals which lock the wheels simultaneously.

Order Code: 0115

Specifications:

- Dimensions 2110mm (L) x 790mm (W)

TRAINING RANGE



Bariatric Training Suit

Provided to help support a dignified approach to bariatric care and assisting carers with training days. Please enquire for more information.

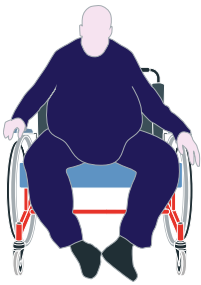


Bariatric Equipment Selection Guide

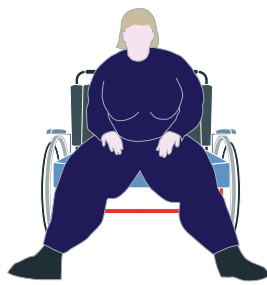
Our professional teams are always on hand to help you choose the best solution for your needs. Here are some patient details you might want to consider when selecting bariatric equipment:

Body Shape

Apple



Pear Abducted



Pear Adducted



Bulbous Gluteal



Age Group	Child	Young Adult	Adult	Mature Adult	Elderly
Height	to 5ft	5ft to 5ft 6"	5ft 6" to 6ft	6ft to 6 ft 6"	over 6ft 6"
Weight	to 20st	20–30st	30–40st	40–50st	50–65st

Mobility Assessment	Pressure Ulcer Risk Assessment
No Limitation (Can stand and walk)	Low
Slightly Limited (Walks with support)	Low to Medium
Limited (Can bear weight)	Medium
Very Limited (Chair bound)	Medium to High
Completely Immobile (Bed bound)	High
Not Conscious	High to Very High Risk

Simple Patient Assessments make equipment choice easier and more cost effective

Order Maker: (Name and Title)	Tel:
Hospital/Ward:	Email:
Patient Name/ID:	Weight: Height:
Body Shape:	Mobility:
PAC Needs:	Date and Time:
Ward Contact:	Tel:
Trust:	ORDER NO:

Always order equipment in line with local protocol and clinical assessment

Weight Conversion

Metric conversions given to the nearest KG

KG	Stone	KG	Stone	KG	Stone	KG	Stone
1	0.15	60	9.44	200	31.49	340	53.54
2	0.31	70	11.02	210	33.06	350	55.11
3	0.47	80	12.59	220	34.64	360	56.69
4	0.62	90	14.17	230	36.21	370	58.26
5	0.78	100	15.74	240	37.79	380	59.83
6	0.94	110	17.32	250	39.36	390	61.41
7	1.10	120	18.89	260	40.94	400	62.98
8	1.25	130	20.47	270	42.51	410	64.56
9	1.41	140	22.04	280	44.09	420	66.13
10	1.57	150	23.62	290	45.66	430	67.71
20	3.14	160	25.19	300	47.24	440	69.28
30	4.72	170	26.77	310	48.81	450	70.86
40	6.29	180	28.34	320	50.39	460	72.43
50	7.87	190	29.91	330	51.96	470	74.01

Notes:



Moving Health Forward

PRESSURE ULCER PREVENTION

SAFE MOVING & HANDLING

SPECIALIST THERAPIES

BATHROOM SAFETY

SPECIALIST SEATING

RENTAL & SERVICE SOLUTIONS



DHG

Withey Court, Western Industrial Estate

Caerphilly, United Kingdom

CF83 1BF

T: +44 (0) 845 459 9831

F: +44 (0) 845 459 9832

E: info@directhealthcaregroup.com



LIT-00041 Issue 1
Date: OCTOBER 2022

DHG-HEALTHCARE.COM